



# 168 CANAL STREET

Meticulously maintained brick building at the edge of SoHo.

**AVAILABLE NOW**

**SUITE 306**  
3,290 RSF

NEARBY SUBWAY LINES  
**Canal Street (6, N, Q, J lines)**  
*4 minute walk*  
**Canal Street (R line)**  
*5 minute walk*  
**Grand Street (B, D lines)**  
*5 minute walk*

Monitored Security Cameras

Attended Lobby

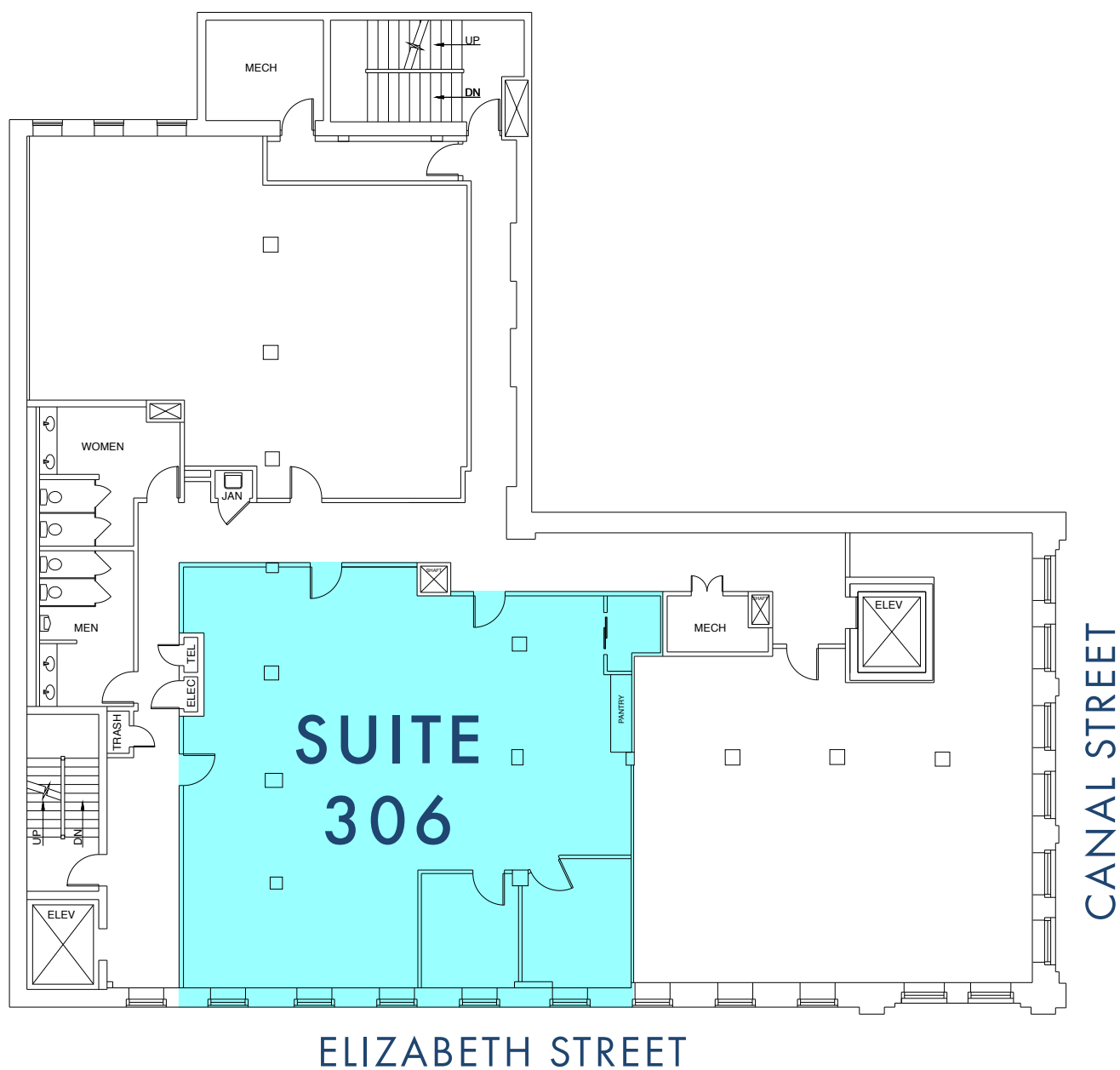
Two High-Speed Elevators

Wet Pantry within Suite

Central HVAC Throughout the Entire Building

Close Proximity to City Hall, Neighboring Parks & SoHo

Perfect for an Architecture Firm or Start Up Tech Company



**Matthew J. Coudert**  
 Executive Vice President  
 212-542-2121  
[mcoudert@gcomfort.com](mailto:mcoudert@gcomfort.com)

**Alexander N. Bermingham**  
 Senior Associate  
 212-542-2189  
[abermingham@gcomfort.com](mailto:abermingham@gcomfort.com)



**GEORGE COMFORT & SONS, INC**  
 Commercial Real Estate Since 1919