

17,038 SF AVAILABLE FOR SUBLEASE

KINGSBROOK OFFICE PARK

2 INTERNATIONAL DRIVE
RYE BROOK, NY



KINGSBROOK OFFICE PARK

2 International Drive
Rye Brook, NY

PROPERTY HIGHLIGHTS

17,038 SF on 3rd Floor



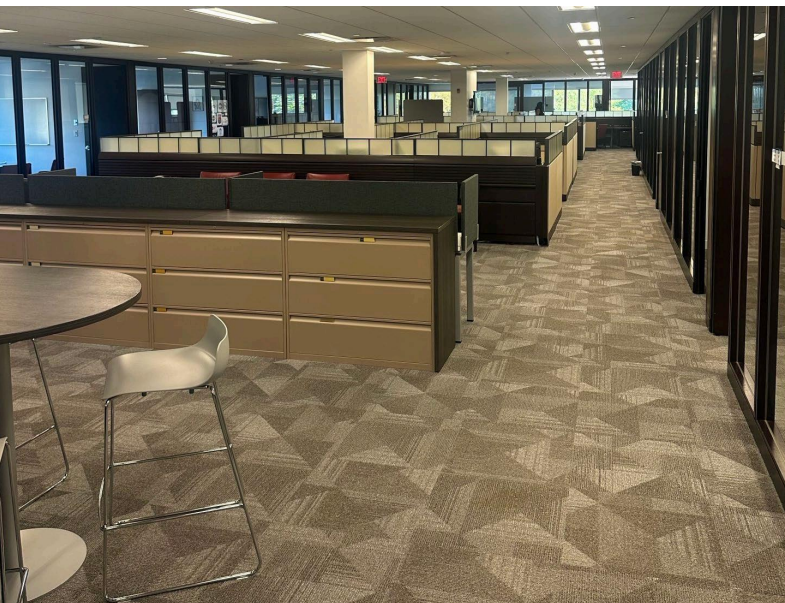
TERM
THROUGH 11/30/2028



FURNITURE
CAN BE MADE AVAILABLE



RENT
NEGOTIABLE



KINGSBROOK OFFICE PARK

2 International Drive
Rye Brook, NY

BUILDING AMENITIES

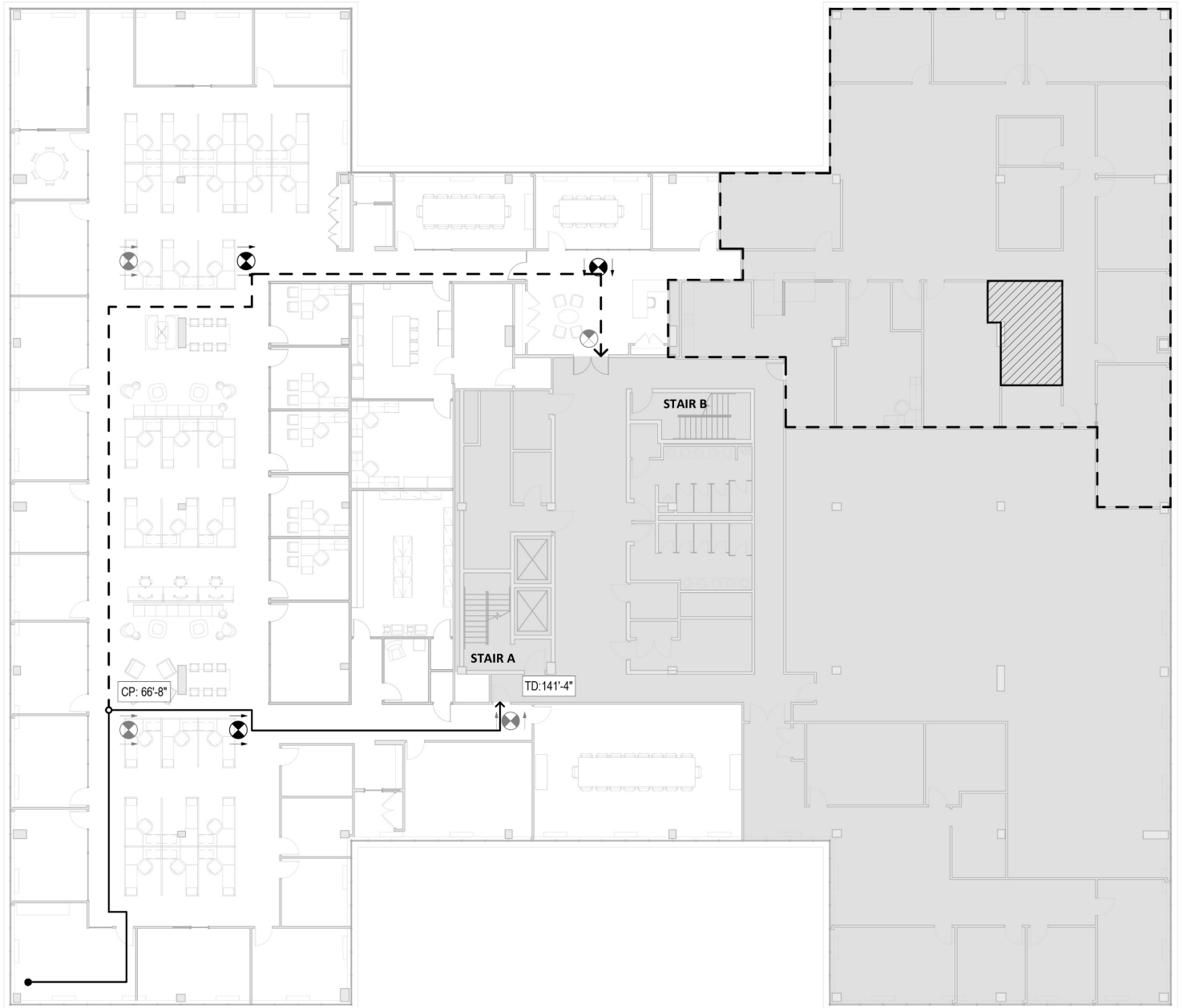
- 24 Hour Access
- Fitness Center
- Accent Lighting
- Property Manager on Site
- Air Conditioning
- Wi-Fi
- Conferencing Facility



KINGSBROOK OFFICE PARK

2 International Drive
Rye Brook, NY

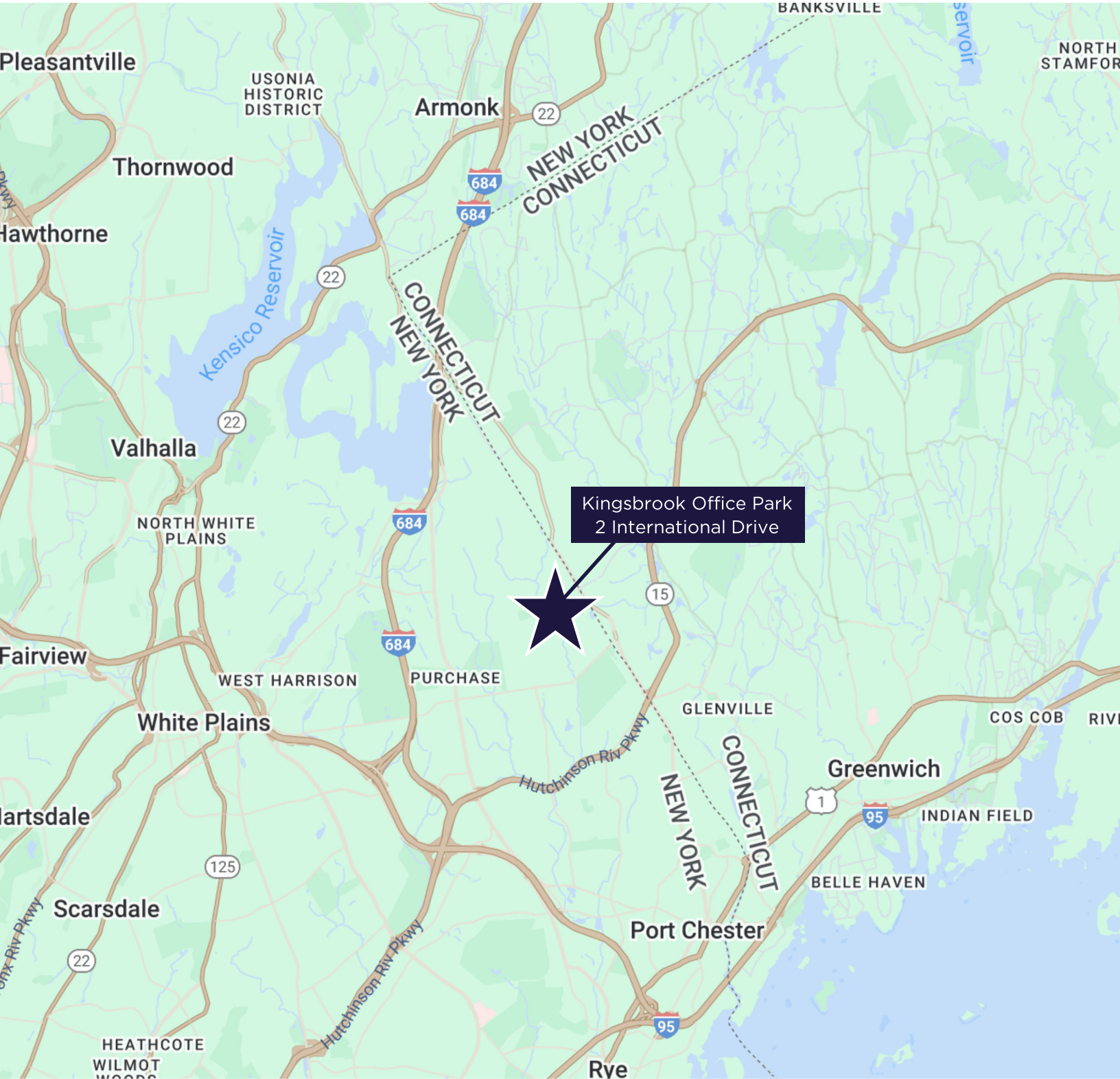
FLOOR PLAN



KINGSBROOK OFFICE PARK

2 International Drive

Rye Brook, NY





FOR MORE INFORMATION, CONTACT:

MICHAEL J. MCCARTHY
+1 914 643 7770
michael.mccarthy@cushwake.com

KEVIN MCCARTHY
+1 914 659 6695
kevin.mccarthy@cushwake.com

ALAN WILDES
+1 212 841 5925
alan.wildes@cushwake.com



Cushman & Wakefield of Connecticut, Inc.
44 S Broadway
White Plains, NY 10601
cushmanwakefield.com

©2025 Cushman & Wakefield. All rights reserved. The information contained in this communication is strictly confidential. This information has been obtained from sources believed to be reliable but has not been verified. No warranty or representation, express or implied, is made as to the condition of the property (or properties) referenced herein or as to the accuracy or completeness of the information contained herein, and same is submitted subject to errors, omissions, change of price, rental or other conditions, withdrawal without notice, and to any special listing conditions imposed by the property owner(s). Any projections, opinions or estimates are subject to uncertainty and do not signify current or future property performance.