



SPACE - DIRECT LEASE

63 Madison Avenue

New York, NY | Gramercy Park

DETAIL

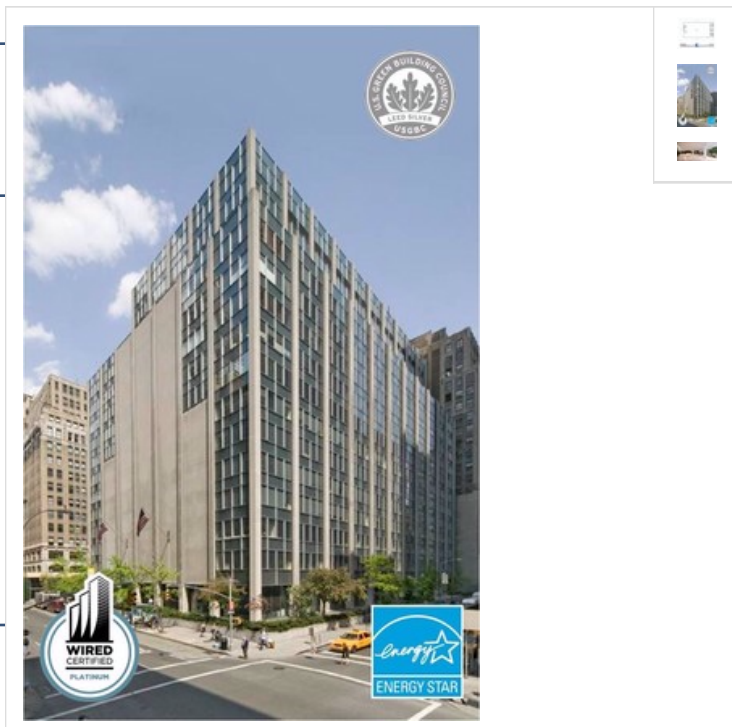
Floor/Suite	15 / Suite 1500
Total SF	33,724 Max Contiguous: 377,583
Rent	Upon Request
Available	Arranged
Use	Office
Suite Notes	-Tenant that takes all 377,583 RSF will have a private lobby with 6 dedicated elevators. -Office ceiling heights range from 11ft 5 inches to 13ft 3 inches -Column spacing is uniformly 23 ft on center

CONTACT

Peter S. Duncan - President and CEO
Phone 212-481-1122

Matthew J. Coudert - Executive Vice President
Phone 212-542-2121

Alex Bermingham - Associate
Phone 212-542-2189



BUILDING DESCRIPTION

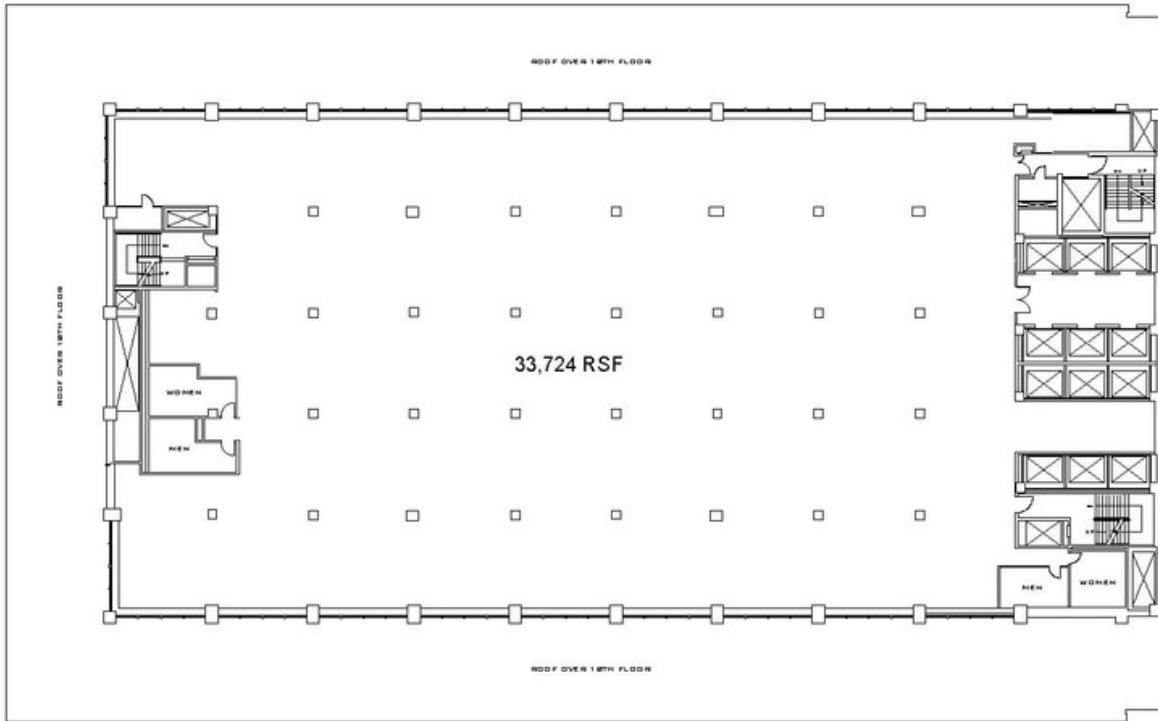
Entrances at East 27th St. and East 28th St.
Private Terrace on the 13th Floor.
Tenants include Ziff Davis & NY Life Insurance.
*Proposed Lobby Shown

MAJOR TENANTS

Ziff-Davis, Inc. & New York Life Insurance

OTHER BUILDING INFO

Telecom: WiredNYC Platinum: Broadview, Lexent, Lightpath, Time Warner Cable, Verizon High-Speed Internet & Verizon FIOS **Sprinkler:** Yes **Security / Lobby:** Tended Lobby **Passenger Elevators:** 12 passenger elevators **Freight Elevators:** 1 freight, 4 escalators **Building Area:** 870,000 sf **Number of Floors:** 15 **Floor Sizes:** Floors 2-12 are 55,000 sf, Floors 13-15 are 35,000 sf **Owner:** 63 Madison Associates **Manager:** George Comfort & Sons, Inc. **Year Built/Renovated:** Built: 1961 **Block/Lot:** 857/24 **Tenancy:** Multi-tenant **Building Class:** A- **Primary Type:** Office



63 Madison

George Comfort & Sons, Inc.
200 Madison Avenue New York, NY 10016



Floor 15

Prepared by PlanData Systems Corp
December 6, 2016



NOT TO SCALE