



SPACE - DIRECT LEASE

## 158 West 27th Street

New York, NY | Chelsea

### DETAIL

|                    |  |
|--------------------|--|
| <b>Floor/Suite</b> | 8 / Suite 800  |
| <b>Total SF</b>    | 9,661  |
| <b>Rent</b>        | Upon Request   |
| <b>Available</b>   | Arranged   |
| <b>Use</b>         | Office   |
| <b>Suite Notes</b> | 11 ft ceilings Great natural light Renovated lobby and elevators |

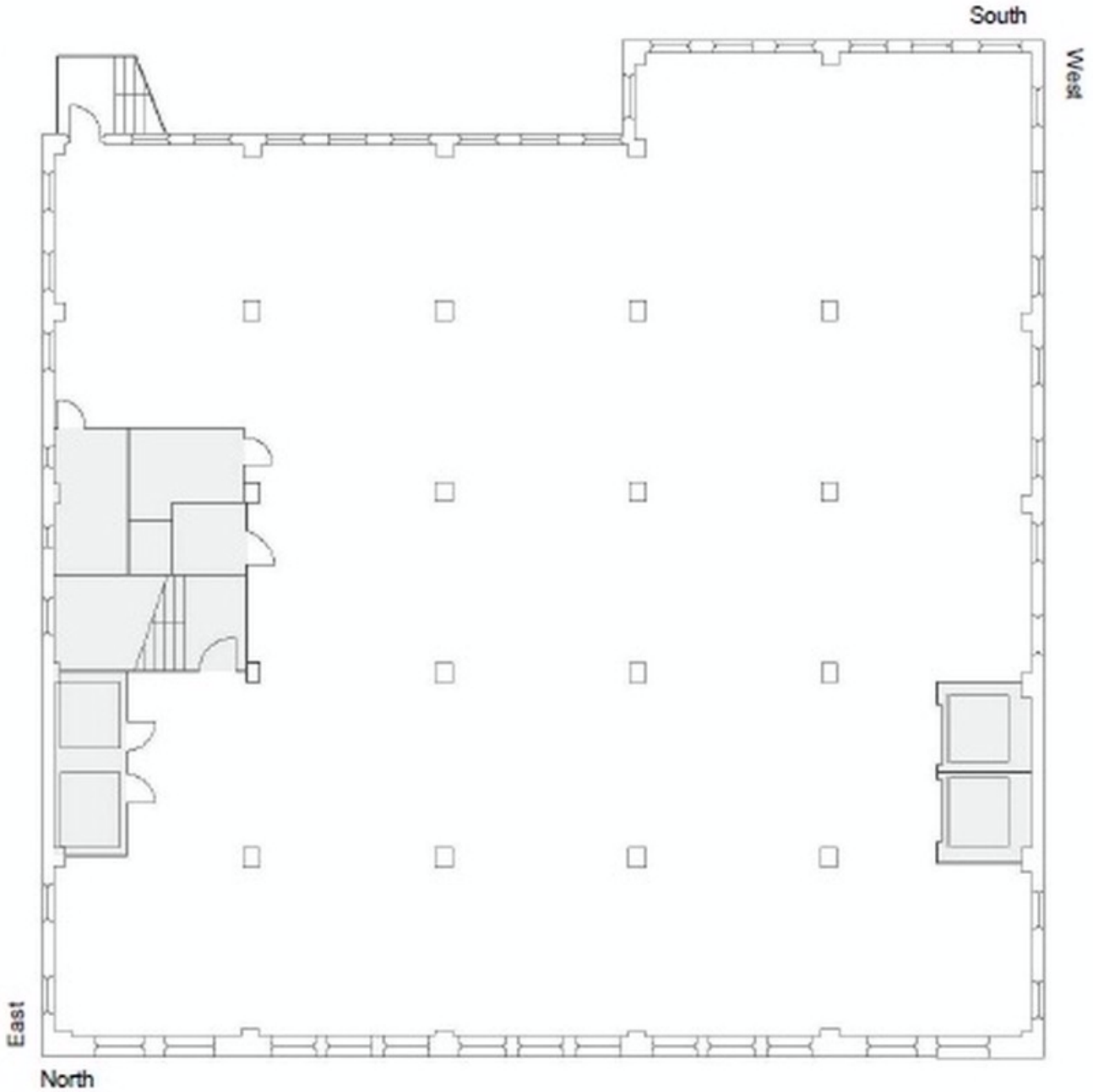
### CONTACT

**Matthew J. Coudert** - Executive Vice President  
Phone 212-542-2121



### OTHER BUILDING INFO

**Telecom:** Time Warner, Verizon, Above Net, Level 3 & Pilot **Electric:** Three-phase 120/208 volt system **Sprinkler:** Yes **Security / Lobby:** Mon-Fri: 7am-6pm  
**Passenger Elevators:** 2 Cars **Freight Elevators:** 2 Cars **Access:** Business Hours **Building Area:** 117,158 sf **Number of Floors:** 12 **Floor Sizes:** 9,661 RSF  
**Ceiling Height:** Ceiling Heights range from 11 Ft- 13 Ft **Year Built/Renovated:** Built: 1913 Renovated: 2012 **Tenancy:** Multi-tenant **Building Class:** C **Primary Type:** Office **Property Status:** Existing



DISCLAIMER: One full commission in accordance with our rate schedule will be paid, when received by us, to a cooperating broker who consummates a lease executed by both landlord and tenant and exchanged and which has been approved or consummates a sublease executed by both the Sublessor and Sublessee and exchanged and has been approved and has received Landlord's consent. All information furnished is from sources deemed reliable and is submitted subject to errors, omissions, change of other terms and conditions, prior sale, lease, sublease or financing, or withdrawal without notice.