



SPACE - DIRECT LEASE

158 West 27th Street

New York, NY | Chelsea

DETAIL

Floor/Suite	7 / Suite 700
Total SF	9,661
Rent	Upon Request
Available	01 Nov 2017
Use	Office
Suite Notes	11 ft ceilings Great natural light Renovated lobby and elevators

CONTACT

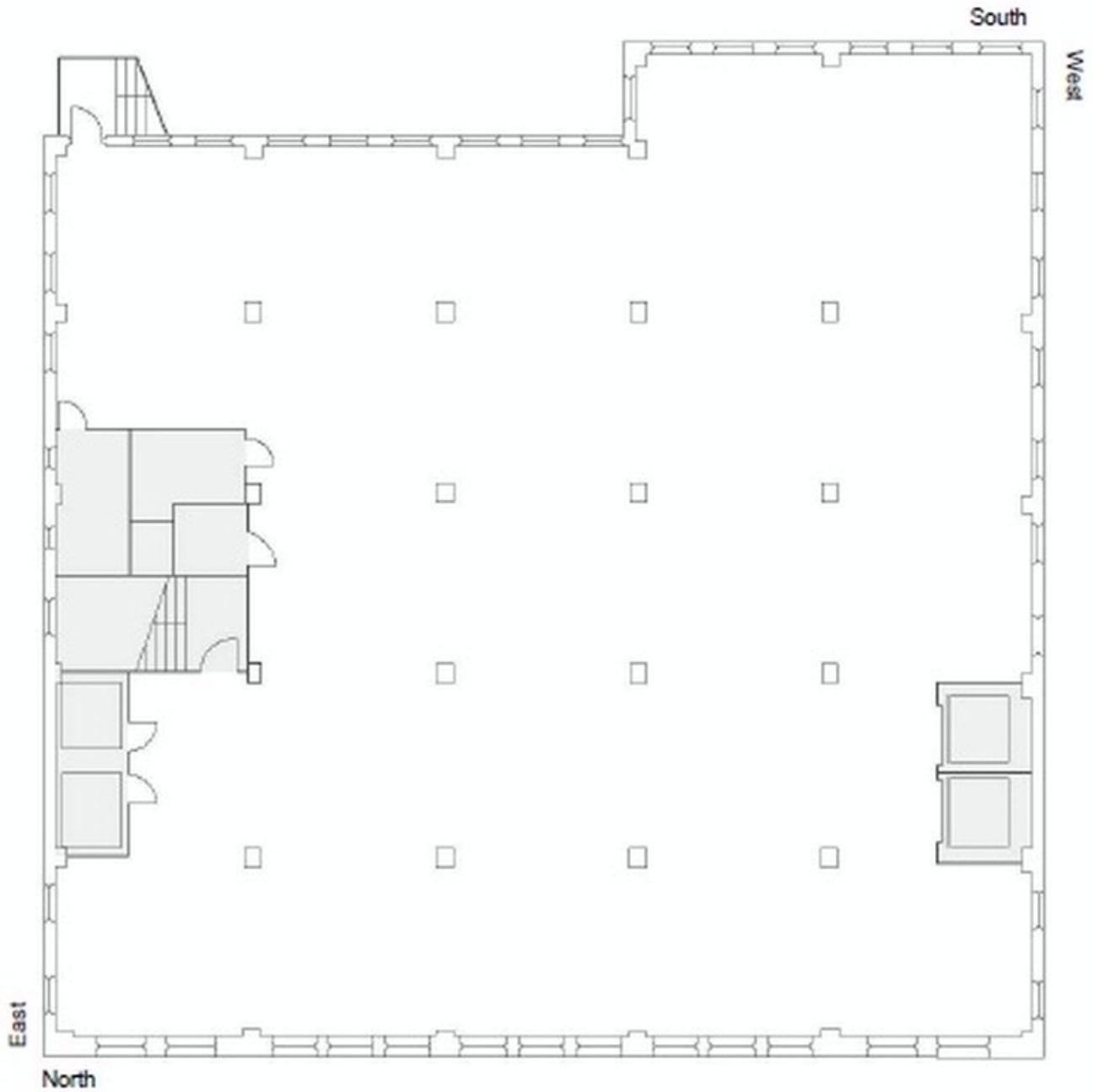
Matthew J. Coudert - Executive Vice President
Phone 212-542-2121

Alex Bermingham - Associate
Phone 212-542-2189



OTHER BUILDING INFO

Telecom: Time Warner, Verizon, Above Net, Level 3 & Pilot **Electric:** Three-phase 120/208 volt system **Sprinkler:** Yes **Security / Lobby:** Mon-Fri: 7am-6pm
Passenger Elevators: 2 Cars **Freight Elevators:** 2 Cars **Access:** Business Hours **Building Area:** 117,158 sf **Number of Floors:** 12 **Floor Sizes:** 9,661 RSF
Ceiling Height: Ceiling Heights range from 11 Ft- 13 Ft **Year Built/Renovated:** Built: 1913 Renovated: 2012 **Tenancy:** Multi-tenant **Building Class:** C **Primary Type:** Office **Property Status:** Existing



DISCLAIMER: One full commission in accordance with our rate schedule will be paid, when received by us, to a cooperating broker who consummates a lease executed by both landlord and tenant and exchanged and which has been approved or consummates a sublease executed by both the Sublessor and Sublessee and exchanged and has been approved and has received Landlord's consent. All information furnished is from sources deemed reliable and is submitted subject to errors, omissions, change of other terms and conditions, prior sale, lease, sublease or financing, or withdrawal without notice.