



SPACE - DIRECT LEASE

200 Madison Avenue

New York, NY | Murray Hill

www.200Madison.com

DETAIL

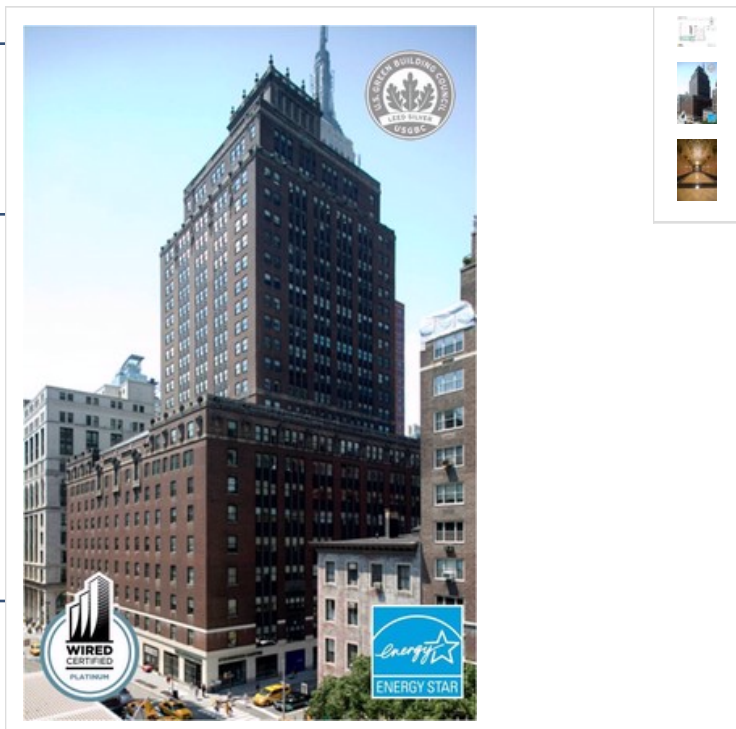
Floor/Suite	22 / Suite 2230
Total SF	2,379 Max Contiguous: 6,609
Rent	Upon Request
Available	Immediate
Use	Office
Suite Notes	High end pre-build with two offices, one conference room, pantry and bench seating for 12.

CONTACT

Peter S. Duncan - President and CEO
Phone 212-481-1122

Matthew J. Coudert - Executive Vice President
Phone 212-542-2121

Andrew F. Conrad - Senior Associate of Asset Management
Phone 212-542-2101



BUILDING DESCRIPTION

24 hr/7day access, Beautiful Restored Lobby, Modernized Elevators, On Site Owner/Management; Starbucks and New York Sports Club on the Premises

MAJOR TENANTS

Major Tenants include Philips-Van Heusen; Roche BoBois; Greater New York Mutual Insurance; Rose Associates; Maidenform, Inc; EURO RSCG Healthview, Inc.; Kagan, Lubic & Lepper

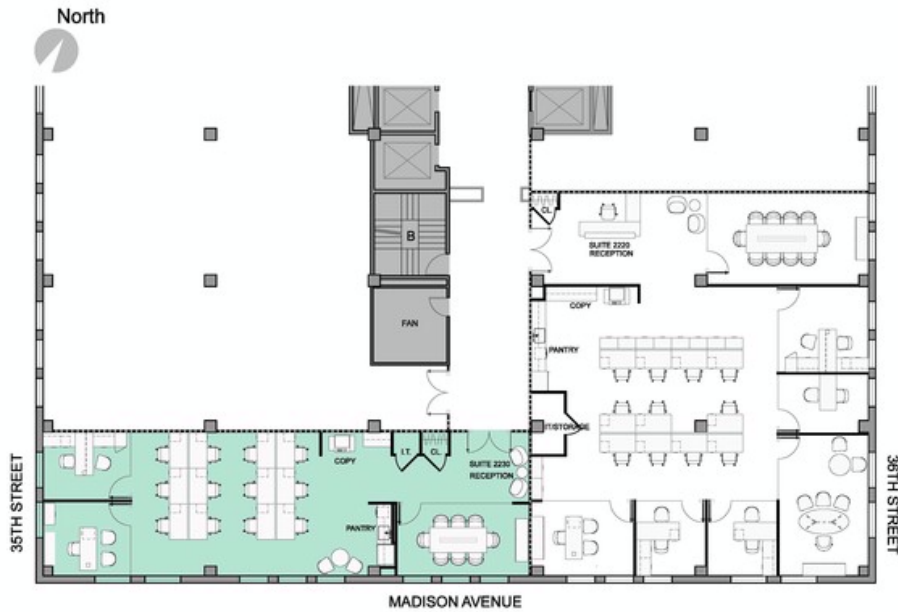
OTHER BUILDING INFO

Telecom: WiredNYC Platinum: AT&T, Broadview, Cogent, Lighttower, Rainbow Broadband, Time Warner Cable, Verizon & Verizon FIOS **Security / Lobby:** Tended Lobby
Passenger Elevators: 12 Passenger cars **Building Area:** 750,000 sf **Number of Floors:** 26 **Floor Sizes:** Floors 2-9 are 46,500 sf; Floors 10-23 are 12,000 - 17,000 sf; Floors 24-26 are 11,254 sf **Owner:** 200 Madison Associates, LP **Manager:** George Comfort & Sons, Inc. **Year Built/Renovated:** Built: 1926 **Tenancy:** Multi-tenant **Building Class:** A **Primary Type:** Office



200 Madison Avenue
22nd Floor

03.13.17



Key Plan: NTS

SUITE 2230

General Information	
RSF	2,379
Total Seats	16

Work Space	Size	Seats
Typical Office	110-160 sqft.	2
Branching	2' 8" x 8' 2"	12
Reception	123 sqft.	2



SCALE

© 2017 MKDA, LLC
These plans are the sole property of MLO KLEINBERG DESIGN ASSOCIATES, LLC.
Use without permission is strictly forbidden and will result in the initiation of legal proceedings.

