



SPACE - DIRECT LEASE

498 Seventh Avenue

New York, NY | Penn Station

www.4987th.com

DETAIL

| | |
|--------------------|---|
| Floor/Suite | 6 / Suite 600 |
| Total SF | 47,546 Min: 47,546 Max Contiguous: 528,222 |
| Rent | Upon Request |
| Available | December 2018 |
| Use | Office |
| Suite Notes | Part of a 528,222 RSF block comprised of floors Mezz-10 and floors 22-25. |



CONTACT

Matthew J. Coudert - Executive Vice President
Phone 212-542-2121

Andrew F. Conrad - Senior Associate of Asset Management
Phone 212-542-2101

BUILDING DESCRIPTION

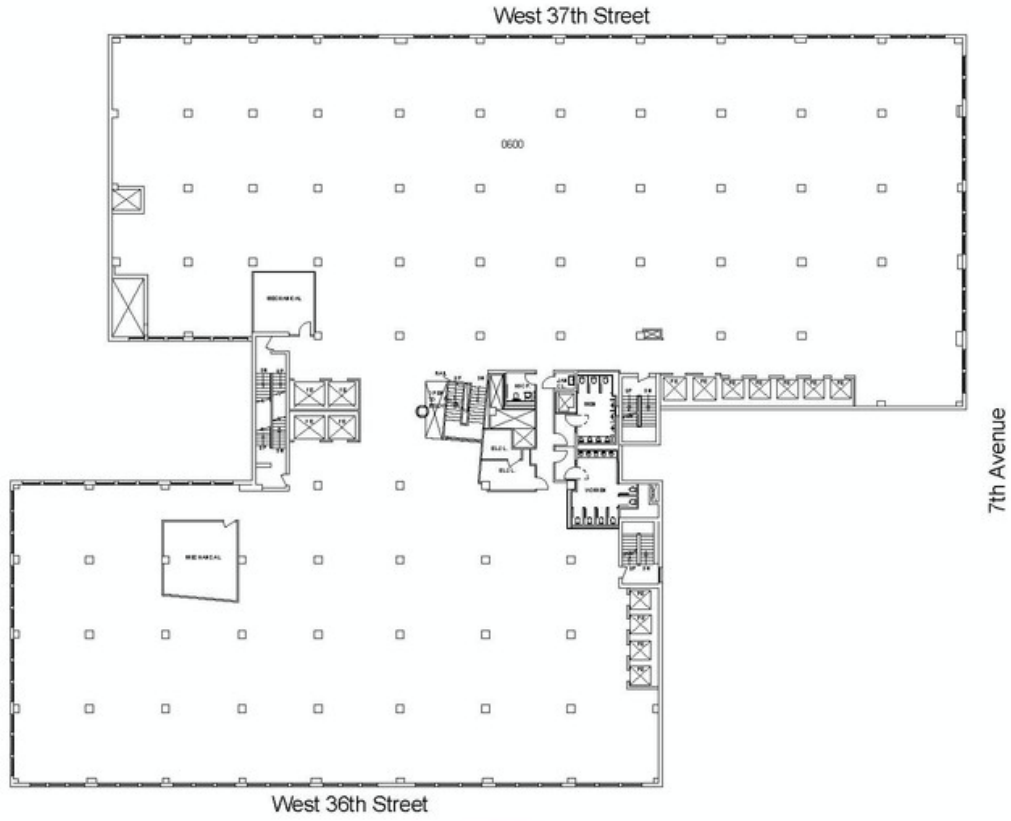
Newly renovated lobby; 24/7 day attended lobby; Convenient to Penn Station & The Port Authority; new elevator cabs; new double insulated operable thermopane windows; freight entrance on 216 W. 37th St.

MAJOR TENANTS

Group M Worldwide, Inc.; LN Holdings, Inc.; Modell's; Jones Apparel; Hazen & Sawyer P.C.; Retail Tenants include JP Morgan Chase Bank

OTHER BUILDING INFO

Telecom: WiredNYC Platinum: Abovenet (Zayo), Cogent, Lightpath, Rainbow Broadband, Lighttower (Sidera), Time Warner Cable, Verizon & Verizon FIOS **Security / Lobby:** Tended Lobby **Passenger Elevators:** 11 Passenger **Building Area:** 960,000 sf **Number of Floors:** 25 **Floor Sizes:** 43,000 sf -25,000 **Owner:** 498 Seventh LLC **Manager:** George Comfort & Sons, Inc. **Year Built/Renovated:** Built: 1920 **Block/Lot:** 786/51 **Tenancy:** Multi-tenant **Building Class:** A-
Primary Type: Office **Property Status:** Existing



498 7th Avenue

George Comfort & Sons, Inc.
200 Madison Avenue New York, NY 10016



Floor 6

Prepared by PlanData Systems Corp
September 28, 2016

0 5 10 20 30 40 50

PLAN 12/24/16 10/16