



SPACE - DIRECT LEASE

575 Lexington Avenue

New York, NY | Midtown East

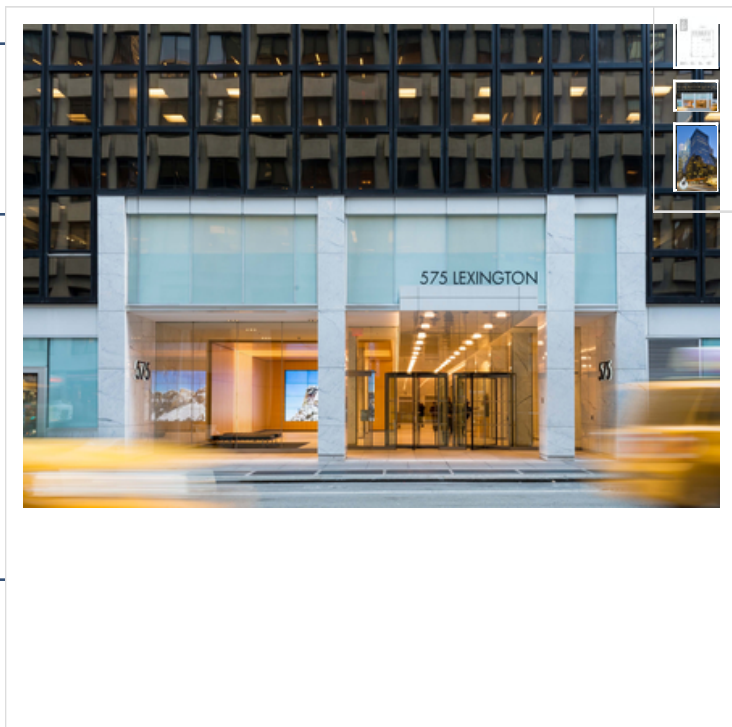
575lexingtonave.com/

DETAIL

| | |
|-------------|--------------------|
| Floor/Suite | 35 / Suite 3500 |
| Total SF | 9,786 |
| Rent | Upon Request |
| Available | Immediate |
| Use | Office |
| Suite Notes | Entire 35th Floor. |

CONTACT

Dana R. Pike - Senior Vice President
Phone 212-542-2116



MAJOR TENANTS

Cornell University & Boies Schiller & Flexner LLP

AMENITIES

Brand new lobby.

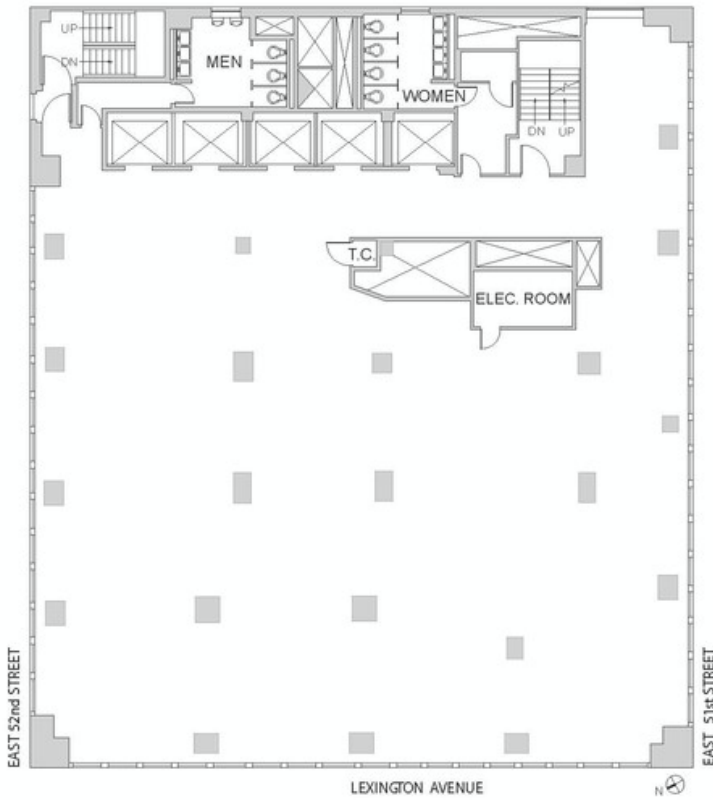
OTHER BUILDING INFO

Telecom: WiredNYC Platinum - Multiple POE and riser pathways support ISPs/tenants redundancy and diversity requirements. **Electric:** WATTS/SF: 6. **Sprinkler:** Yes **Security / Lobby:** 24/7 Attended lobby security Tended Lobby Key Card Access **Building Area:** 745,000 sf **Number of Floors:** 35 **Floor Sizes:** 9,768 - 41,370 RSF **Ceiling Height:** 11' 6" **Manager:** George Comfort & Sons **Year Built/Renovated:** Built: 1958 Renovated: 1990 **Block/Lot:** 01306-0023 **Building Class:** A



**575
LEX
ING
TON**

ENTIRE 35TH FLOOR
9,786 RSF



FOR LEASING INFORMATION,
PLEASE CONTACT:



PETER S. DUNCAN
President
212.481.1122
pduncan@gcomfort.com

DANA R. PIKE
Senior VP
212.542.2116
dpike@gcomfort.com

ANDREW F. CONRAD
Senior Associate
212.542.2101
aconrad@gcomfort.com