



SPACE - DIRECT LEASE

575 Lexington Avenue

New York, NY | Midtown East

575lexingtonave.com/

DETAIL

Floor/Suite	32 / Suite 3200
Total SF	9,852
Rent	Upon Request
Available	Immediate
Use	Office
Suite Notes	High End Pre-build

CONTACT

Dana R. Pike - Senior Vice President
Phone 212-542-2116



MAJOR TENANTS

Cornell University

AMENITIES

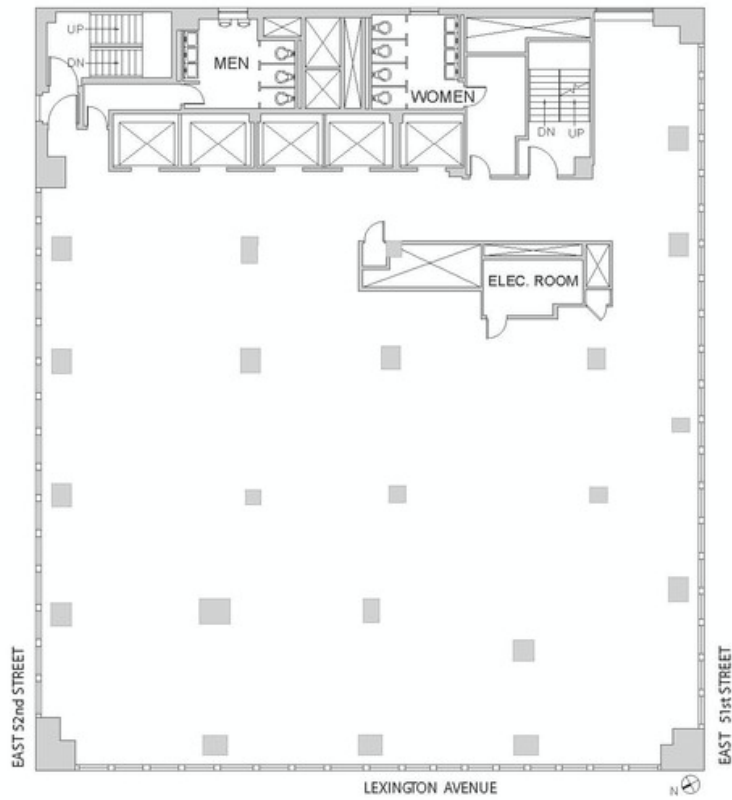
Brand new lobby.

OTHER BUILDING INFO

Telecom: WiredNYC Platinum - Multiple POE and riser pathways support ISPs/tenants redundancy and diversity requirements. **Electric:** WATTS/SF: 6. **Sprinkler:** Yes. **Security / Lobby:** 24/7 Attended / Attended Lobby Card Key Access Tended Lobby Key Card Access. **Building Area:** 745,000 sf. **Number of Floors:** 35. **Floor Sizes:** 9,768 - 41,370 RSF. **Ceiling Height:** 11' 6". **Manager:** George Comfort & Sons. **Year Built/Renovated:** Built: 1958 Renovated: 2014. **Block/Lot:** 01306-0023. **Building Class:** A



ENTIRE 32ND FLOOR
9,852 RSF



FOR LEASING INFORMATION,
PLEASE CONTACT:



PETER S. DUNCAN
President
212.481.1122
pduncan@gcomfort.com

DANA R. PIKE
Senior VP
212.542.2116
dpike@gcomfort.com

ANDREW F. CONRAD
Senior Associate
212.542.2101
aconrad@gcomfort.com