



SPACE - DIRECT LEASE

## 575 Lexington Avenue

New York, NY | Midtown East

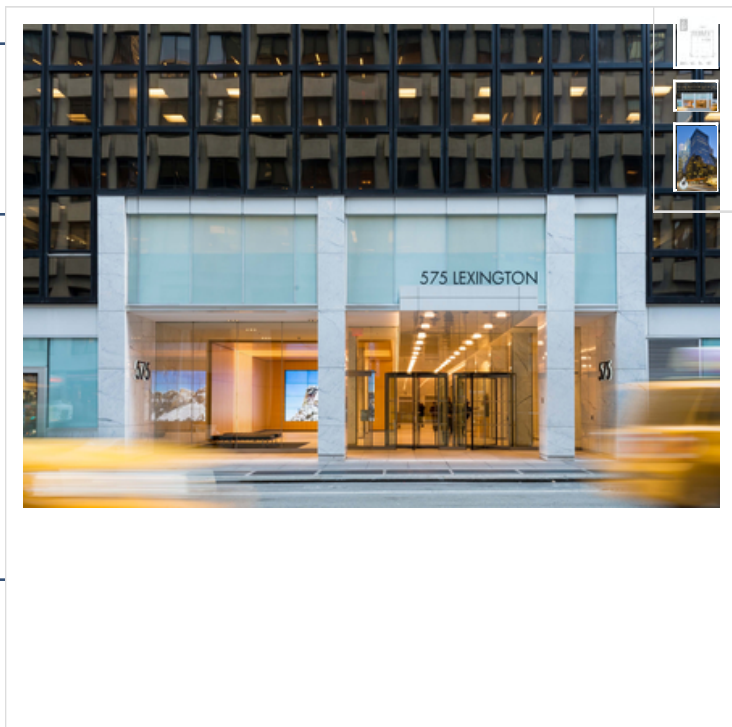
[575lexingtonave.com/](http://575lexingtonave.com/)

DETAIL

Floor/Suite	32 / Suite 3200
Total SF	9,852
Rent	Upon Request
Available	Immediate
Use	Office
Suite Notes	High End Pre-build

CONTACT

**Dana R. Pike** - Senior Vice President  
Phone 212-542-2116



MAJOR TENANTS

Cornell University & Boies Schiller & Flexner LLP

AMENITIES

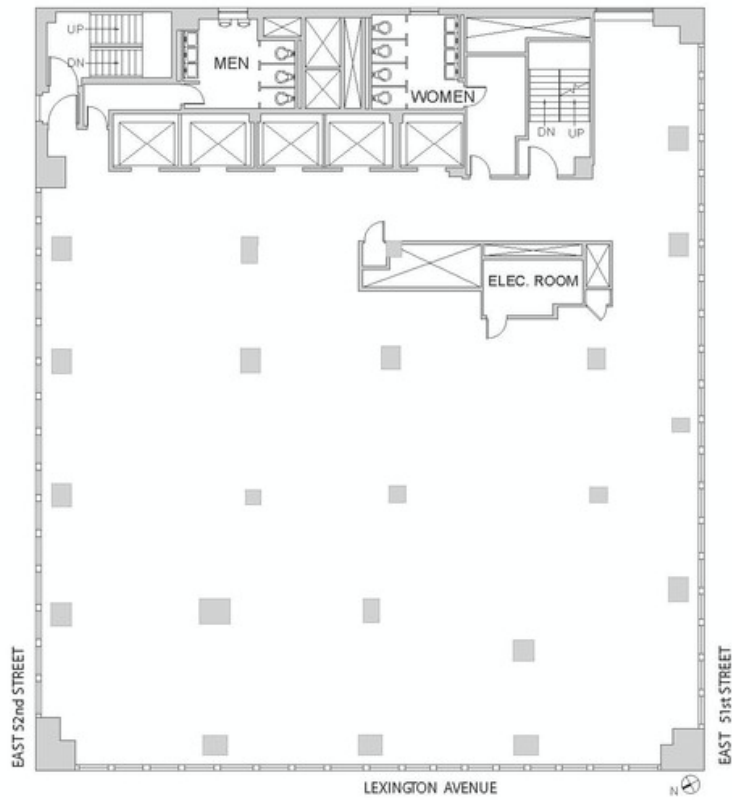
Brand new lobby.

OTHER BUILDING INFO

**Telecom:** WiredNYC Platinum - Multiple POE and riser pathways support ISPs/tenants redundancy and diversity requirements. **Electric:** WATTS/SF: 6. **Sprinkler:** Yes **Security / Lobby:** 24/7 Attended lobby security Tended Lobby Key Card Access **Building Area:** 745,000 sf **Number of Floors:** 35 **Floor Sizes:** 9,768 - 41,370 RSF **Ceiling Height:** 11' 6" **Manager:** George Comfort & Sons **Year Built/Renovated:** Built: 1958 Renovated: 1990 **Block/Lot:** 01306-0023 **Building Class:** A



ENTIRE 32ND FLOOR  
9,852 RSF



FOR LEASING INFORMATION,  
PLEASE CONTACT:



**PETER S. DUNCAN**  
President  
212.481.1122  
pduncan@gcomfort.com

**DANA R. PIKE**  
Senior VP  
212.542.2116  
dpike@gcomfort.com

**ANDREW F. CONRAD**  
Senior Associate  
212.542.2101  
aconrad@gcomfort.com

DISCLAIMER: One full commission in accordance with our rate schedule will be paid, when received by us, to a cooperating broker who consummates a lease executed by both landlord and tenant and exchanged and which has been approved or consummates a sublease executed by both the Sublessor and Sublessee and exchanged and has been approved and has received Landlord's consent. All information furnished is from sources deemed reliable and is submitted subject to errors, omissions, change of other terms and conditions, prior sale, lease, sublease or financing, or withdrawal without notice.