



SPACE - DIRECT LEASE

575 Lexington Avenue

New York, NY | Midtown East

575lexingtonave.com/

DETAIL

Floor/Suite	28 / Suite 2840
Total SF	4,424
Rent	Upon Request
Available	Immediate
Use	Office
Suite Notes	Recently completed beautiful prebuilt, with above standard finishes including stone reception, glass, sheet rock ceilings and brand new pantry with stainless steel appliances.

CONTACT

Dana R. Pike - Senior Vice President
Phone 212-542-2116

MAJOR TENANTS

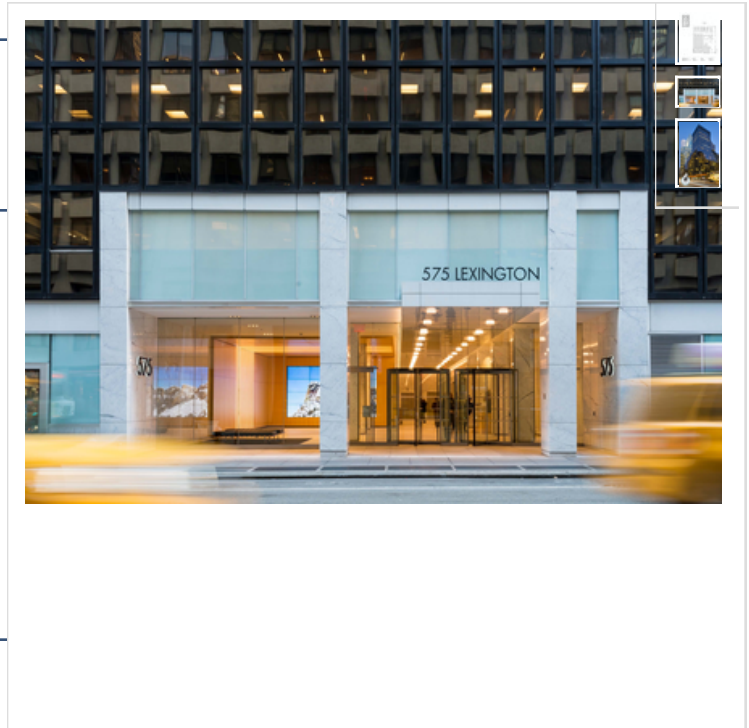
Cornell University & Boies Schiller & Flexner LLP

AMENITIES

Brand new lobby.

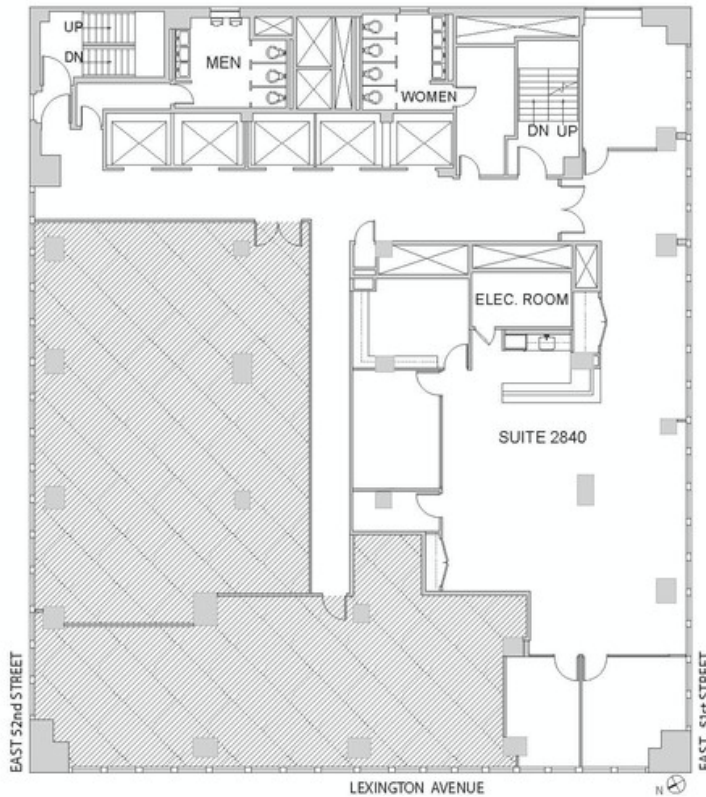
OTHER BUILDING INFO

Telecom: WiredNYC Platinum - Multiple POE and riser pathways support ISPs/tenants redundancy and diversity requirements. **Electric:** WATTS/SF: 6. **Sprinkler:** Yes **Security / Lobby:** 24/7 Attended lobby security Tended Lobby Key Card Access **Building Area:** 745,000 sf **Number of Floors:** 35 **Floor Sizes:** 9,768 - 41,370 RSF **Ceiling Height:** 11' 6" **Manager:** George Comfort & Sons **Year Built/Renovated:** Built: 1958 Renovated: 1990 **Block/Lot:** 01306-0023 **Building Class:** A





SUITE 2840
4,424 RSF



FOR LEASING INFORMATION,
PLEASE CONTACT:



PETER S. DUNCAN
President
212.481.1122
pduncan@gcomfort.com

DANA R. PIKE
Senior VP
212.542.2116
dpike@gcomfort.com

ANDREW F. CONRAD
Senior Associate
212.542.2101
aconrad@gcomfort.com