



SPACE - DIRECT LEASE

575 Lexington Avenue

New York, NY | Midtown East

575lexingtonave.com/

DETAIL

Floor/Suite	23 / Suite A
Total SF	3,071
Rent	Upon Request
Available	Immediate
Use	Office
Suite Notes	High End Pre-build

CONTACT

Dana R. Pike - Senior Vice President
Phone 212-542-2116

Andrew F. Conrad - Senior Associate of Asset Management
Phone 212-542-2101

MAJOR TENANTS

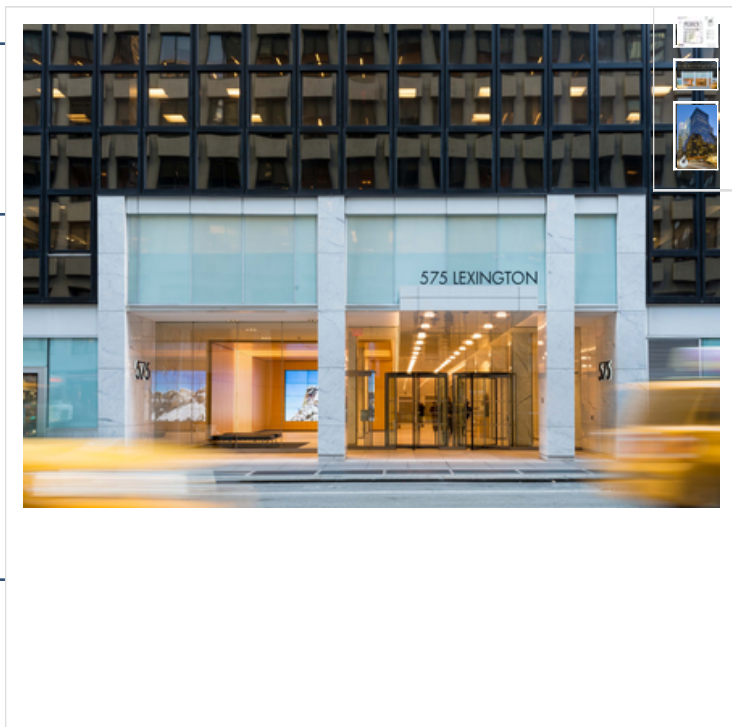
Cornell University & Boies Schiller & Flexner LLP

AMENITIES

Brand new lobby.

OTHER BUILDING INFO

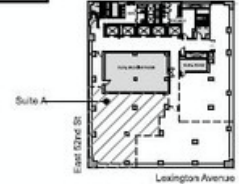
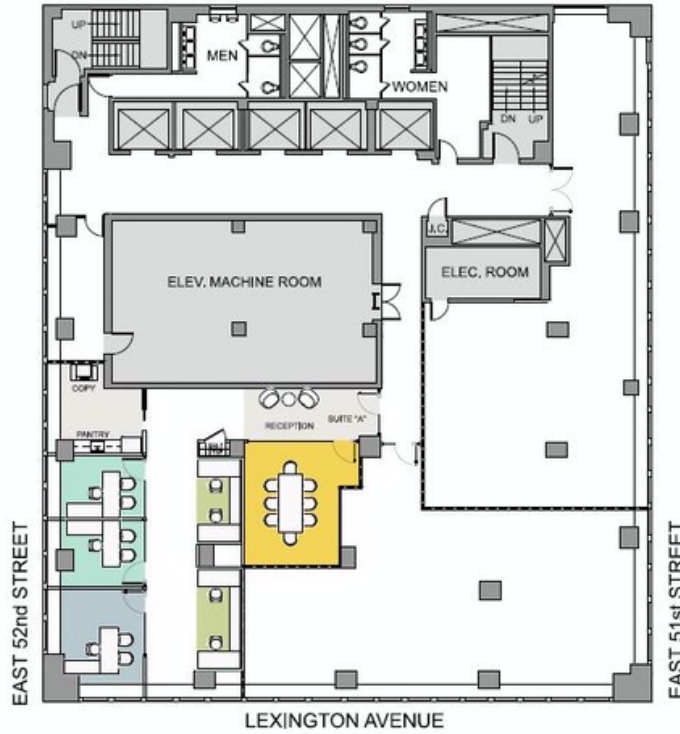
Telecom: WiredNYC Platinum - Multiple POE and riser pathways support ISPs/tenants redundancy and diversity requirements. **Electric:** WATTS/SF: 6. **Sprinkler:** Yes **Security / Lobby:** 24/7 Attended lobby security Tended Lobby Key Card Access **Building Area:** 745,000 sf **Number of Floors:** 35 **Floor Sizes:** 9,768 - 41,370 RSF **Ceiling Height:** 11' 6" **Manager:** George Comfort & Sons **Year Built/Renovated:** Built: 1958 Renovated: 1990 **Block/Lot:** 01306-0023 **Building Class:** A





575 Lexington Avenue

23rd Floor - Suite A
11.09.16



Key Plan: NTS

General Information - Suite A

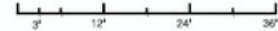
RSF	3,071
Total Seats	8

Work Space

	Seats
Executive Office	1
Private Office	2
Workstation	4
Reception	1

Support

Conference Room	1
Printery	1
Copy / Support	1
Coat Closet	1



SCALE

© 2016 MKDA, INC.
These plans are the sole property of MKDA/LEHMAN BREKIDG ASSOCIATES, INC. Use without permission is strictly forbidden and will result in the initiation of legal proceedings.

