



SPACE - DIRECT LEASE

## 575 Lexington Avenue

New York, NY | Midtown East

[575lexingtonave.com/](http://575lexingtonave.com/)

DETAIL

<b>Floor/Suite</b>	16 / Suite 1602
<b>Total SF</b>	9,809
<b>Rent</b>	Upon Request
<b>Available</b>	Immediate
<b>Use</b>	Office
<b>Suite Notes</b>	Delivered raw with terrace space.

CONTACT

**Dana R. Pike** - Senior Vice President  
Phone 212-542-2116

**Andrew F. Conrad** - Senior Associate of Asset Management  
Phone 212-542-2101

MAJOR TENANTS

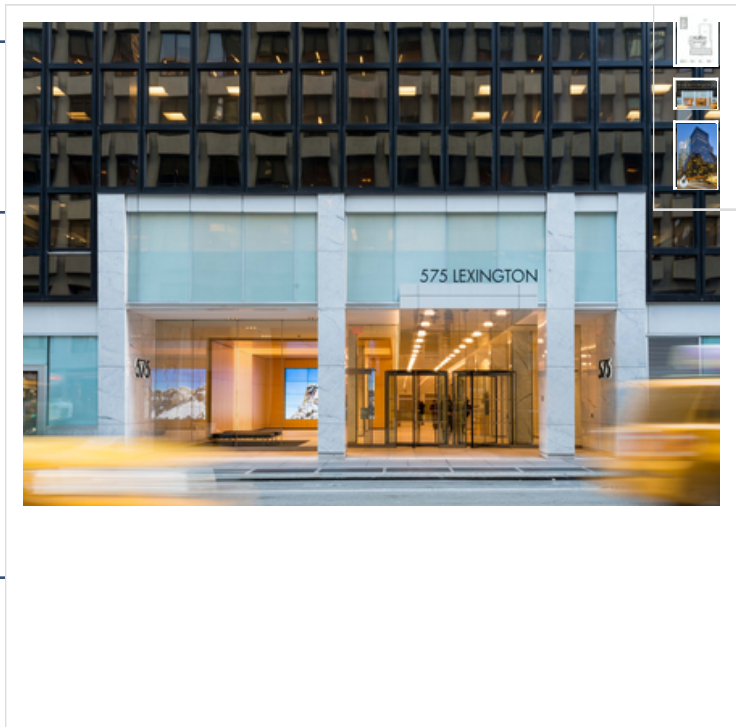
Cornell University & Boies Schiller & Flexner LLP

AMENITIES

Brand new lobby.

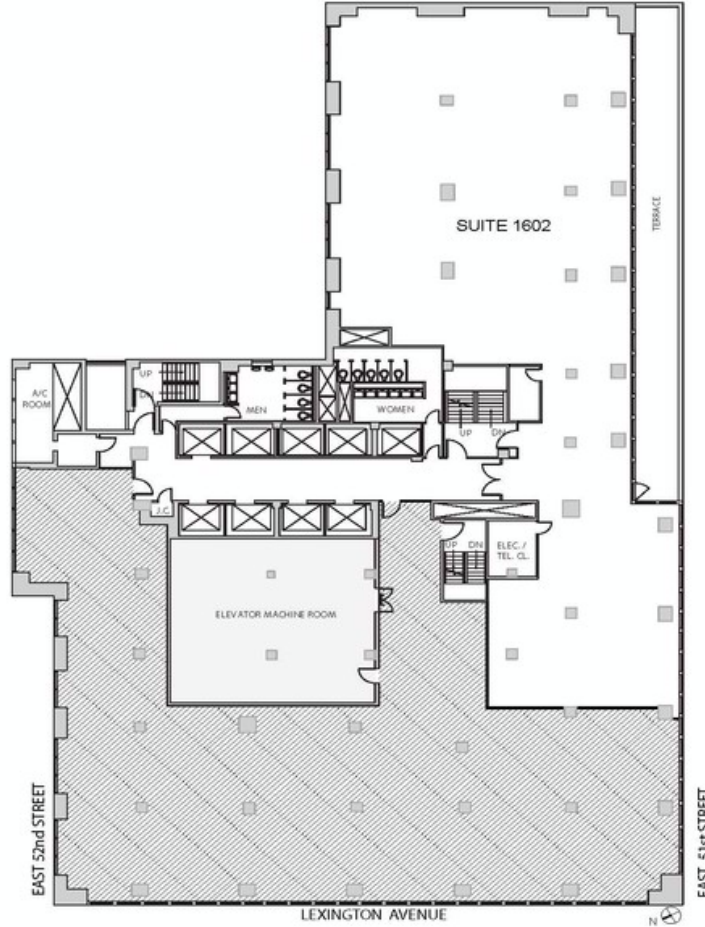
OTHER BUILDING INFO

**Telecom:** WiredNYC Platinum - Multiple POE and riser pathways support ISPs/tenants redundancy and diversity requirements. **Electric:** WATTS/SF: 6. **Sprinkler:** Yes **Security / Lobby:** 24/7 Attended lobby security Tended Lobby Key Card Access **Building Area:** 745,000 sf **Number of Floors:** 35 **Floor Sizes:** 9,768 - 41,370 RSF **Ceiling Height:** 11' 6" **Manager:** George Comfort & Sons **Year Built/Renovated:** Built: 1958 Renovated: 1990 **Block/Lot:** 01306-0023 **Building Class:** A





SUITE 1602  
9,809 RSF



FOR LEASING INFORMATION,  
PLEASE CONTACT:



**PETER S. DUNCAN**  
President  
212.481.1122  
pduncan@gcomfort.com

**DANA R. PIKE**  
Senior VP  
212.542.2116  
dpike@gcomfort.com

**ANDREW F. CONRAD**  
Senior Associate  
212.542.2101  
aconrad@gcomfort.com