



SPACE - DIRECT LEASE

575 Lexington Avenue

New York, NY | Midtown East

575lexingtonave.com/

DETAIL

Floor/Suite	14 / Suite 1400
Total SF	22,729
Rent	Upon Request
Available	Immediate
Use	Office
Suite Notes	Delivered raw. Space has a terrace

CONTACT

Dana R. Pike - Senior Vice President
Phone 212-542-2116

Andrew F. Conrad - Senior Associate of Asset Management
Phone 212-542-2101

MAJOR TENANTS

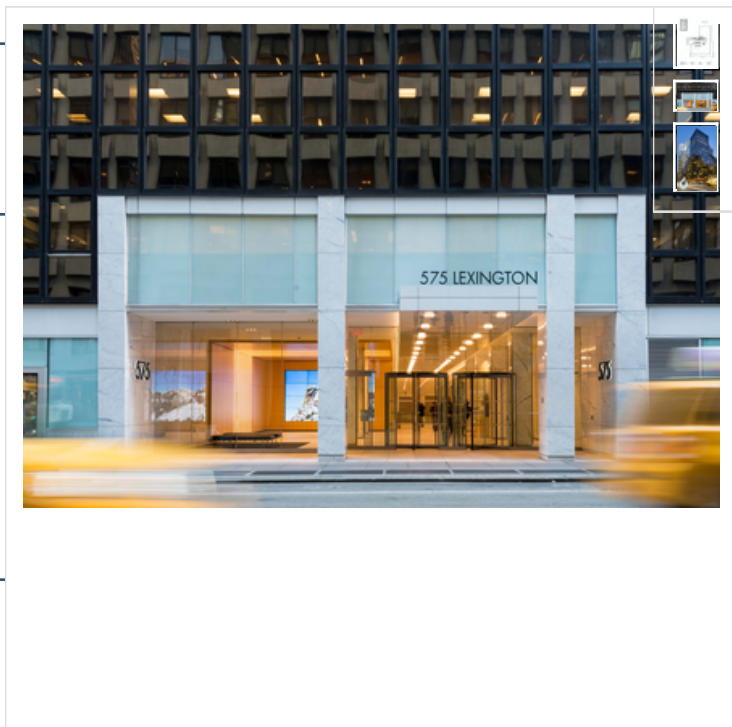
Cornell University & Boies Schiller & Flexner LLP

AMENITIES

Brand new lobby.

OTHER BUILDING INFO

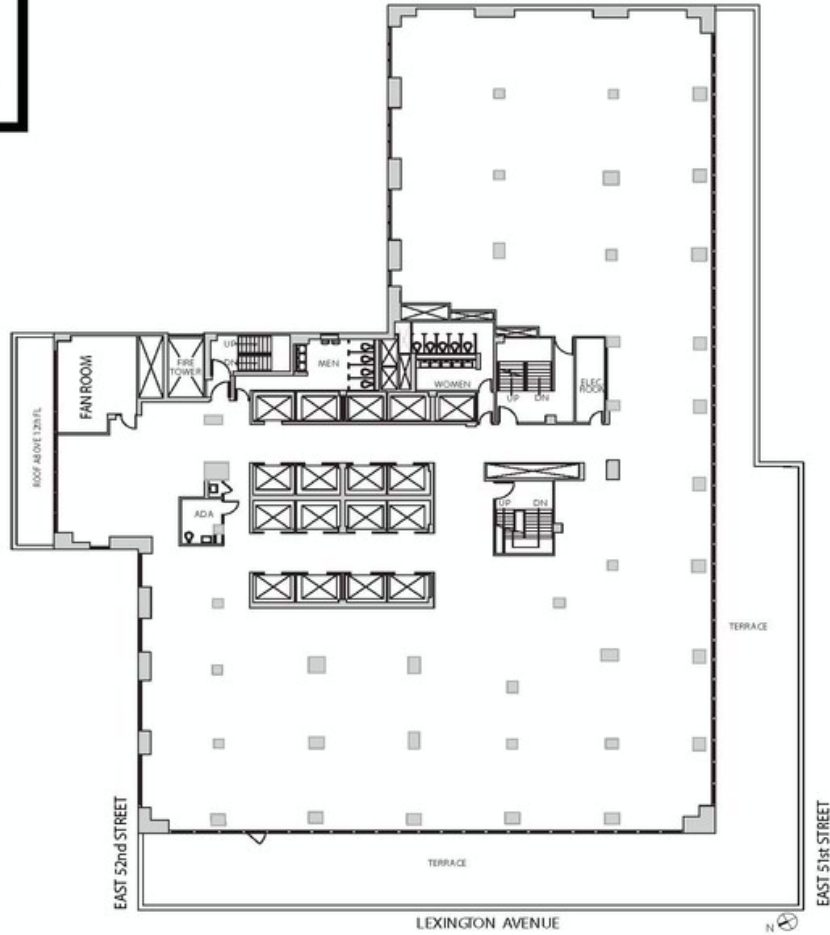
Telecom: WiredNYC Platinum - Multiple POE and riser pathways support ISPs/tenants redundancy and diversity requirements. **Electric:** WATTS/SF: 6. **Sprinkler:** Yes **Security / Lobby:** 24/7 Attended lobby security Tended Lobby Key Card Access **Building Area:** 745,000 sf **Number of Floors:** 35 **Floor Sizes:** 9,768 - 41,370 RSF **Ceiling Height:** 11' 6" **Manager:** George Comfort & Sons **Year Built/Renovated:** Built: 1958 Renovated: 1990 **Block/Lot:** 01306-0023 **Building Class:** A





**575
LEX
ING
TON**

ENTIRE 14TH FLOOR
22,729 RSF



FOR LEASING INFORMATION,
PLEASE CONTACT:



PETER S. DUNCAN
President
212.481.1122
pduncan@gcomfort.com

DANA R. PIKE
Senior VP
212.542.2116
dpike@gcomfort.com

ANDREW F. CONRAD
Senior Associate
212.542.2101
aconrad@gcomfort.com