



SPACE - DIRECT LEASE

Smylie Times Building

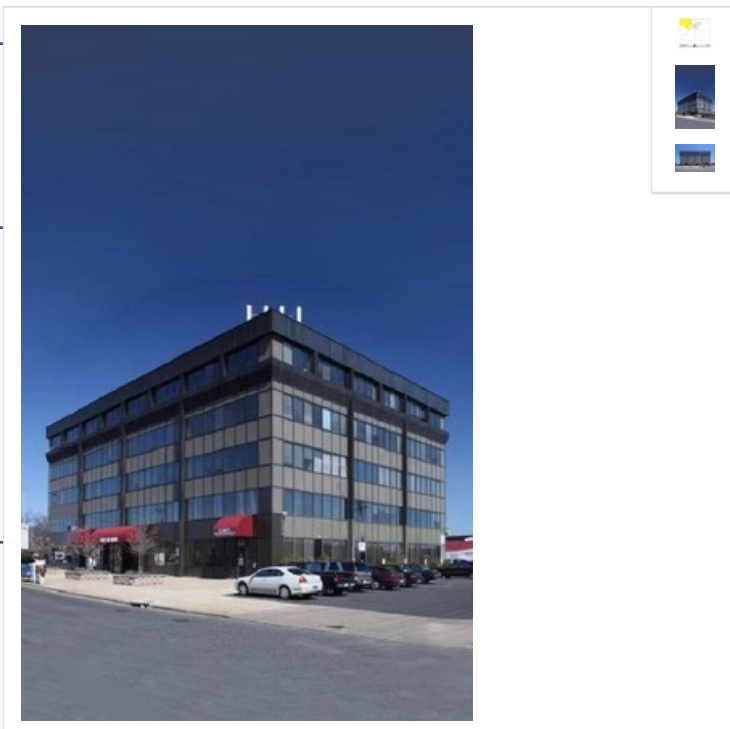
Smylie Times Building 2607 Rhawn Street
Philadelphia, PA | Northeast Philadelphia

DETAIL

Floor/Suite	2 / Suite 200
Total SF	1,785
Rent	Upon Request
Available	Immediate
Use	Office

CONTACT

Andrew F. Conrad - Senior Associate of Asset Management
Phone 212-542-2101



BUILDING DESCRIPTION

Upgraded lobby and hallways; Upgraded exterior facade; Upgraded common area bathrooms; Elevators upgraded; Close to major highways; Public transportation

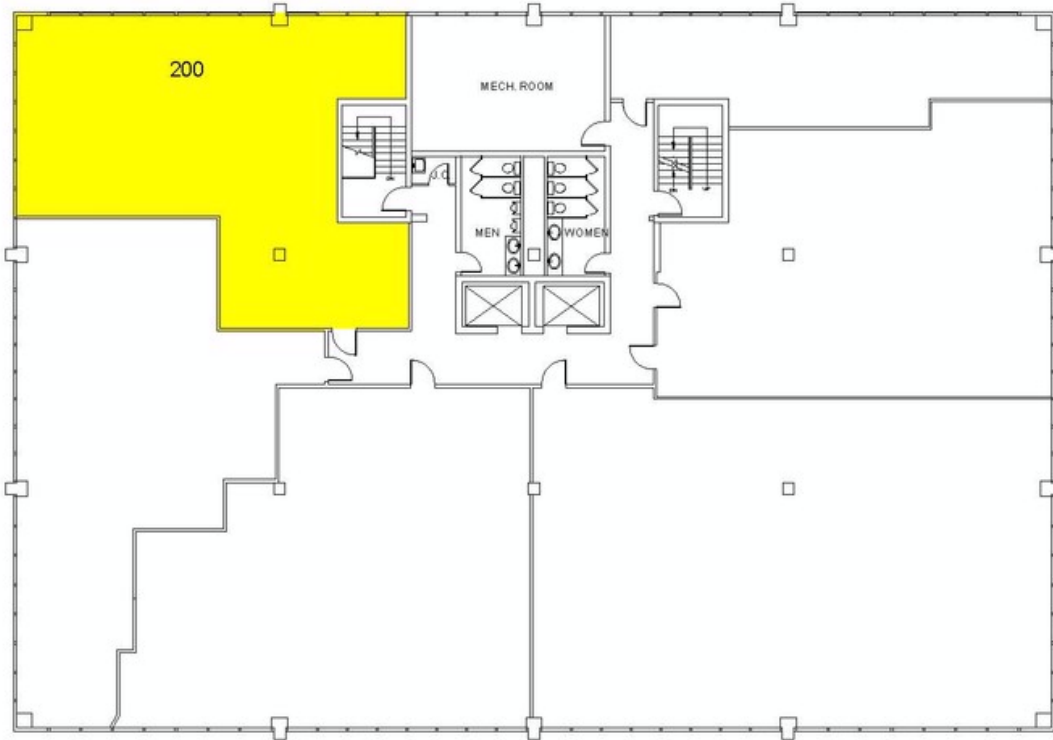
MAJOR TENANTS

Thomas Jefferson University Hospital, Inc.; Tri-State Imaging; Care Connection; Wives Self-Help Foundation; The Foot & Ankle Group, P.C.; Deirdre Woodm M.D., PC;

OTHER BUILDING INFO

Passenger Elevators: 2 **Building Area:** 85,000 sf **Number of Floors:** 5 **Floor Sizes:** 12,000 sq. ft. **Owner:** Smylie and Boulevard LP **Manager:** George Comfort & Sons, Inc. **Year Built/Renovated:** Built: 1973 **Tenancy:** Multi-tenant **Building Class:** B **Primary Type:** Office **Property Status:** Existing

DISCLAIMER: One full commission in accordance with our rate schedule will be paid, when received by us, to a cooperating broker who consummates a lease executed by both landlord and tenant and exchanged and which has been approved or consummates a sublease executed by both the Sublessor and Sublessee and exchanged and has been approved and has received Landlord's consent. All information furnished is from sources deemed reliable and is submitted subject to errors, omissions, change of other terms and conditions, prior sale, lease, sublease or financing, or withdrawal without notice.



2607 Rhawn St

George Comfort & Sons, Inc.
200 Madison Avenue New York, NY 10016



Floor 2

Prepared by PlanData Systems Corp
February, 2015

0 5 10 20 30

2015-11-04-11-12