



SPACE - SUBLEASE

900 King Street

900 King Street 900 King Street
Rye Brook, NY | Westchester

DETAIL

Floor/Suite	1 / 100
Total SF	32,058
Rent	Upon Request
Available	Immediate
Use	Office

CONTACT

Peter S. Duncan - President and CEO
Phone 212-481-1122

Dana R. Pike - Senior Vice President
Phone 212-542-2116



BUILDING DESCRIPTION

This building features a three-story skylighted indoor atrium/lobby. Located on a campus-like setting of 17.76 acres.

MAJOR TENANTS

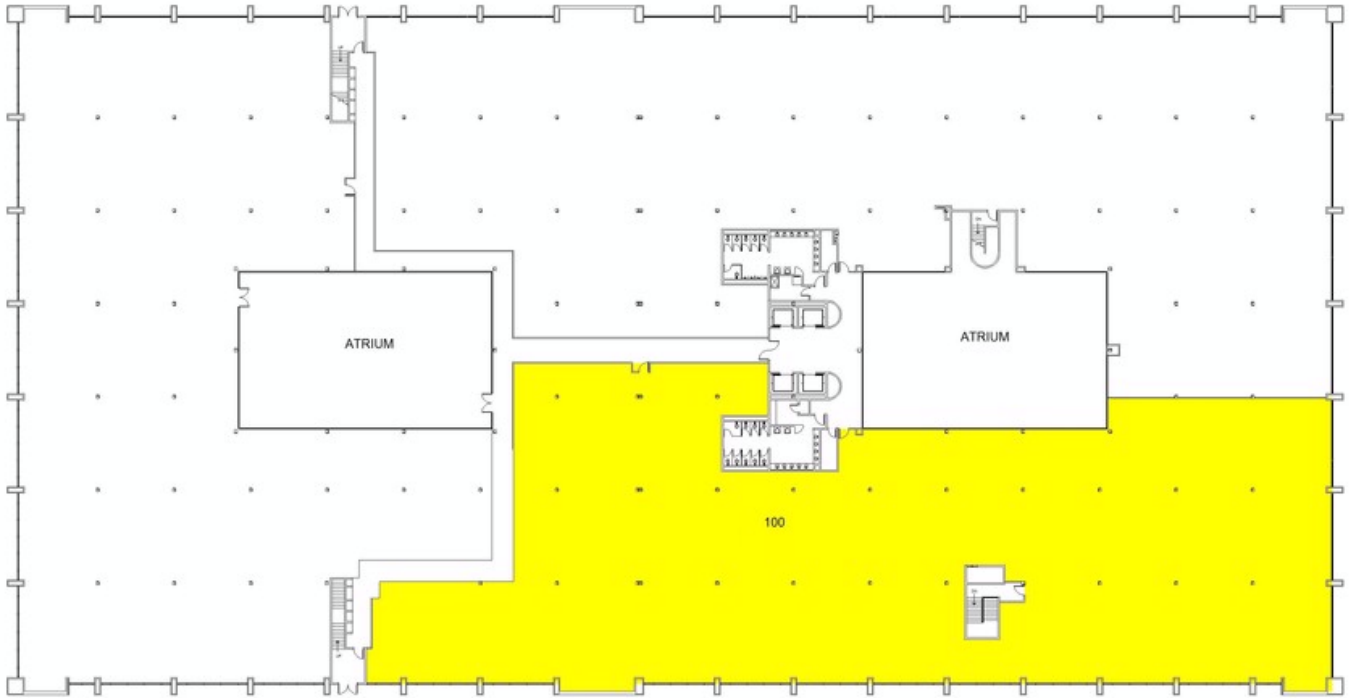
Greenwich Hospital; Kenmar

AMENITIES

ATM machine. Atrium. Attractive landscaped grounds. Café. Conference facility. Covered parking. Food service. Fully sprinklered grounds. High speed internet. On-site management. Picnic areas.

OTHER BUILDING INFO

PARKING: SPACES PER 1,000 SF: 3 Sprinkler: Full Security / Lobby: 24/7 Tended Lobby Passenger Elevators: 4 Building Area: 215,000 sf Number of Floors: 2 Floor Sizes: 100,000 Owner: Rye King Associates, LLC Manager: George Comfort & Sons, Inc. Year Built/Renovated: Built: 1981 Lot Size: 17.76 acres Tenancy: Multi-tenant Building Class: A Primary Type: Office Property Status: Existing



900 King Street

George Comfort & Sons, Inc.
200 Madison Avenue New York, NY 10016



Floor 1

Prepared by PlanData Systems Corp
March 6, 2014

0 20 40 60 80 100