



SPACE - DIRECT LEASE

## 208 Harbor Drive

Stamford, CT | Stamford

[www.shippanlanding.com](http://www.shippanlanding.com)

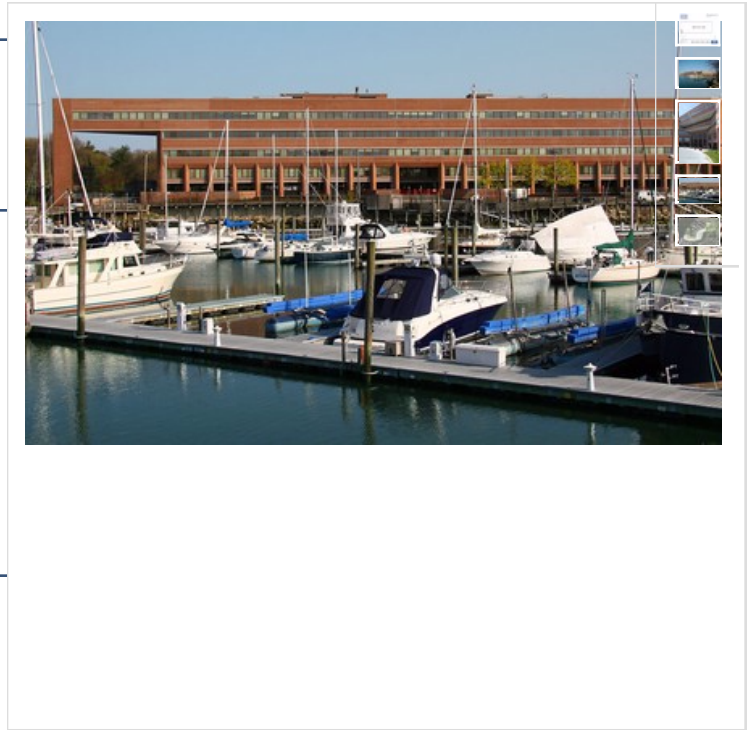
### DETAIL

Floor/Suite	3 / 300
Total SF	52,879
Rent	Upon Request
Available	Immediate
Use	Office
Suite Notes	Premises is divisible

### CONTACT

**Peter S. Duncan** - President and CEO  
Phone 212-481-1122

**Dana R. Pike** - Senior Vice President  
Phone 212-542-2116

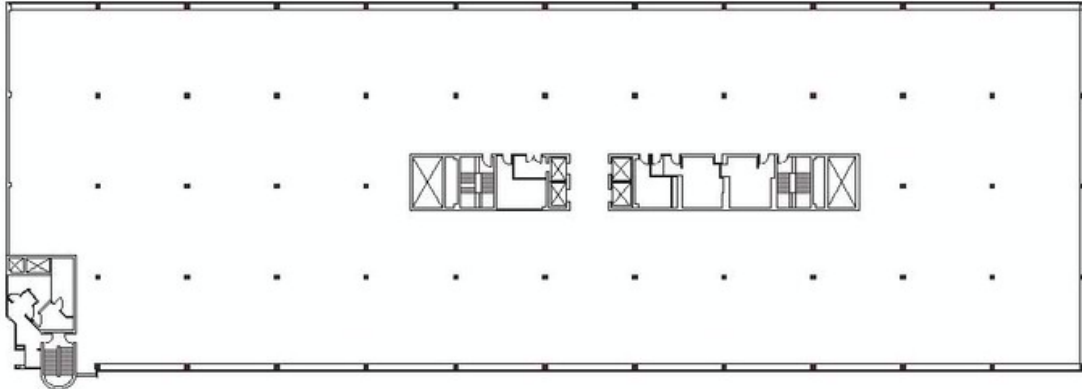


### OTHER BUILDING INFO

**PARKING: SPACES PER 1,000 SF: 3** **Telecom:** All floors have access to the building's fiber optics. Current providers include AT&T, Lightpath, Cogent and Level 3.  
**HVAC:** The entire building is cooled with four self-contained roof top units manufactured by McQuay. **Electric:** 6 watts per sf demand load exclusive of base building air-conditioning. Electrical power consists of 2,500 amp service, 277/480 volt, three phase service supplied by CL&P. Larger tenants can be sub-metered for electric usage from a master meter. **Passenger Elevators:** 4 **Building Area:** 184,997 sf **Number of Floors:** 5 **Floor Sizes:** 52,879 **Ceiling Height:** 12' 0" **Owner:** AG-GCS Shippan Landing Owner LLC **Manager:** George Comfort & Sons, Inc **Year Built/Renovated:** Built: 1980 Renovated: 2012/13 **Lot Size:** 17 acres **Building Class:** A  
**Primary Type:** Office **Property Status:** Existing



208 Harbor Drive  
2nd floor



52,879 RSF



For more information, please contact:



**Paul M. Jacobs**  
(203) 325 5320  
paul.jacobs@cbre.com

**David Block**  
(203) 325 5340  
david.block@cbre.com

**Colin Reilly**  
(203) 325 5390  
colin.reilly@cbre.com

**Dana Pike**  
(212) 542 2116  
dpike@gomfort.com

