



SPACE - DIRECT LEASE

208 Harbor Drive

Stamford, CT | Stamford

www.shippanlanding.com

DETAIL

Floor/Suite	2 / Suite 200
Total SF	5,853
Rent	Upon Request
Available	Immediate
Use	Office

CONTACT

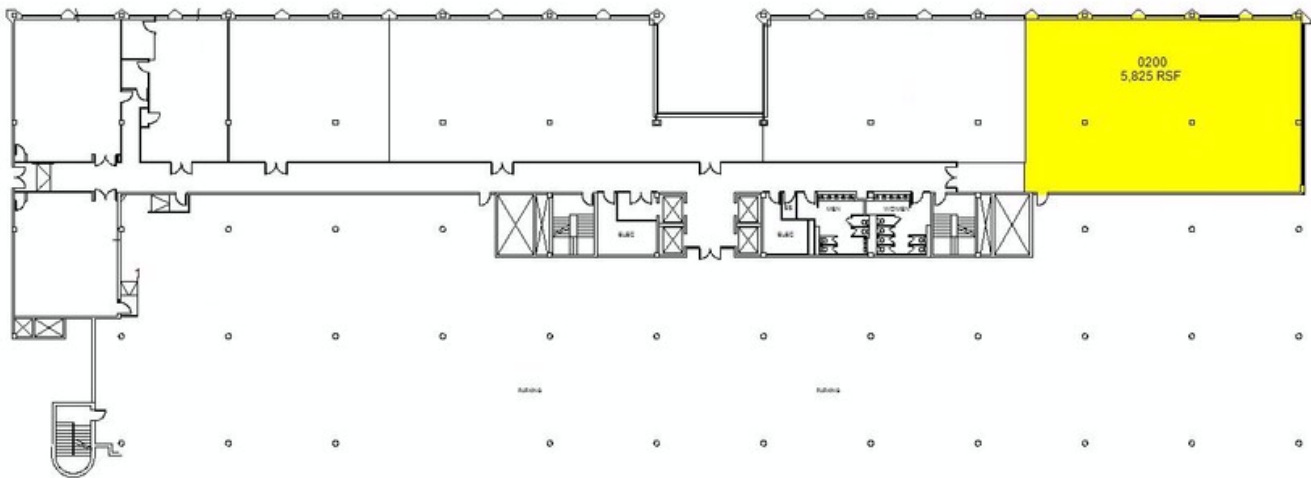
Peter S. Duncan - President and CEO
Phone 212-481-1122

Dana R. Pike - Senior Vice President
Phone 212-542-2116



OTHER BUILDING INFO

PARKING: SPACES PER 1,000 SF: 3 **Telecom:** All floors have access to the building's fiber optics. Current providers include AT&T, Lightpath, Cogent and Level 3.
HVAC: The entire building is cooled with four self-contained roof top units manufactured by McQuay. **Electric:** 6 watts per sf demand load exclusive of base building air-conditioning. Electrical power consists of 2,500 amp service, 277/480 volt, three phase service supplied by CL&P. Larger tenants can be sub-metered for electric usage from a master meter. **Passenger Elevators:** 4 **Building Area:** 184,997 sf **Number of Floors:** 5 **Floor Sizes:** 52,879 **Ceiling Height:** 12' 0" **Owner:** AG-GCS Shippan Landing Owner LLC **Manager:** George Comfort & Sons, Inc **Year Built/Renovated:** Built: 1980 Renovated: 2012/13 **Lot Size:** 17 acres **Building Class:** A
Primary Type: Office **Property Status:** Existing



208 Shippan Landing

George Comfort & Sons, Inc.
200 Madison Avenue New York, NY 10016



Floor 2

Prepared by PlanData Systems Corp
February 23, 2018

0 5 10 20 30 40 50

