



SPACE - DIRECT LEASE

## 900 King Street

900 King Street 900 King Street  
Rye Brook, NY | Westchester

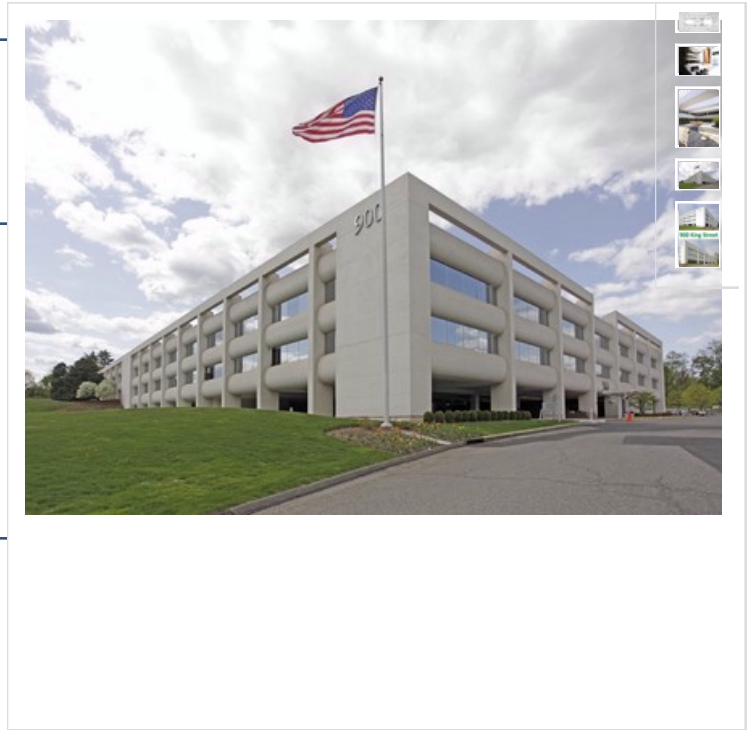
DETAIL

Floor/Suite	2 / Entire 2nd
Total SF	100,000 <b>Min:</b> 25,000
Rent	Upon Request
Available	Immediate
Use	Office

CONTACT

**Peter S. Duncan** - President and CEO  
Phone 212-481-1122

**Dana R. Pike** - Senior Vice President  
Phone 212-542-2116



BUILDING DESCRIPTION

This building features a three-story skylighted indoor atrium/lobby. Located on a campus-like setting of 17.76 acres.

MAJOR TENANTS

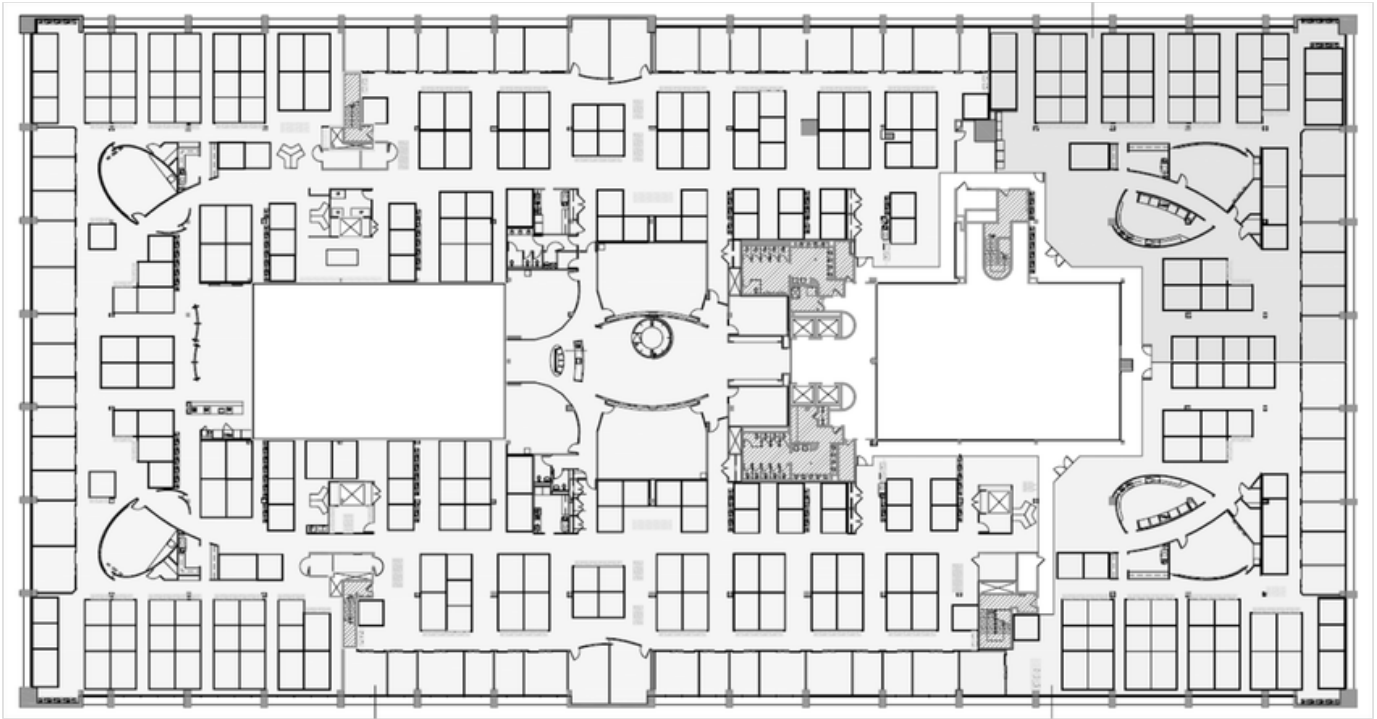
Greenwich Hospital; Kenmar

AMENITIES

ATM machine. Atrium. Attractive landscaped grounds. Café. Conference facility. Covered parking. Food service. Fully sprinklered grounds. High speed internet. On-site management. Picnic areas.

OTHER BUILDING INFO

**PARKING: SPACES PER 1,000 SF:** 3 **Sprinkler:** Full **Security / Lobby:** 24/7 Tended Lobby **Passenger Elevators:** 4 **Building Area:** 215,000 sf **Number of Floors:** 2 **Floor Sizes:** 100,000 **Owner:** Rye King Associates, LLC **Manager:** George Comfort & Sons, Inc. **Year Built/Renovated:** Built: 1981 **Lot Size:** 17.76 acres **Tenancy:** Multi-tenant **Building Class:** A **Primary Type:** Office **Property Status:** Existing



DISCLAIMER: One full commission in accordance with our rate schedule will be paid, when received by us, to a cooperating broker who consummates a lease executed by both landlord and tenant and exchanged and which has been approved or consummates a sublease executed by both the Sublessor and Sublessee and exchanged and has been approved and has received Landlord's consent. All information furnished is from sources deemed reliable and is submitted subject to errors, omissions, change of other terms and conditions, prior sale, lease, sublease or financing, or withdrawal without notice.