



SPACE - DIRECT LEASE

2 Manhattanville Road

Purchase, NY | Westchester
www.thecentreatpurchase.com

DETAIL

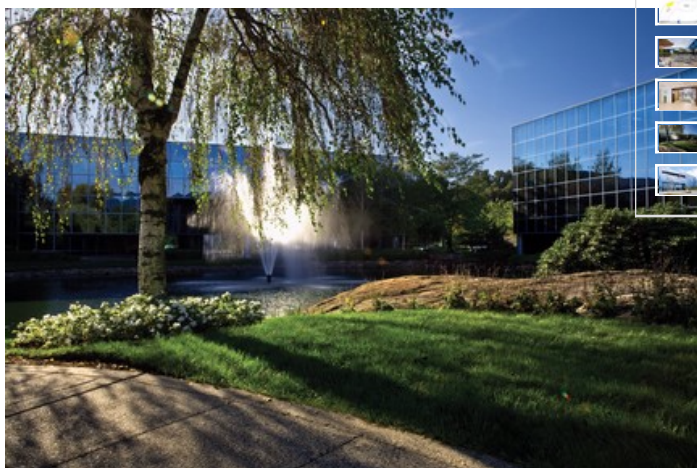
Floor/Suite	2 / Suite 206
Total SF	5,613
Rent	\$33.00 psf
Available	Immediate
Use	Office

CONTACT

Peter S. Duncan - President and CEO
Phone 212-481-1122

Dana R. Pike - Senior Vice President
Phone 212-542-2116

Andrew Joseph - Vice President
Phone 212-481-1122 Ext 2123



BUILDING DESCRIPTION

The distinctive combination of amenities and total ease of access from virtually any point in Westchester County and beyond create a truly Class A corporate campus. The Centre at Purchase consists of one 3-story and three 4-story office buildings. The 43-acre corporate campus includes abundant parking, gourmet cafe, professional gym, and onsite management. The centrally located pond features fountains, picnic tables, and bridges for all the tenants to enjoy.

MAJOR TENANTS

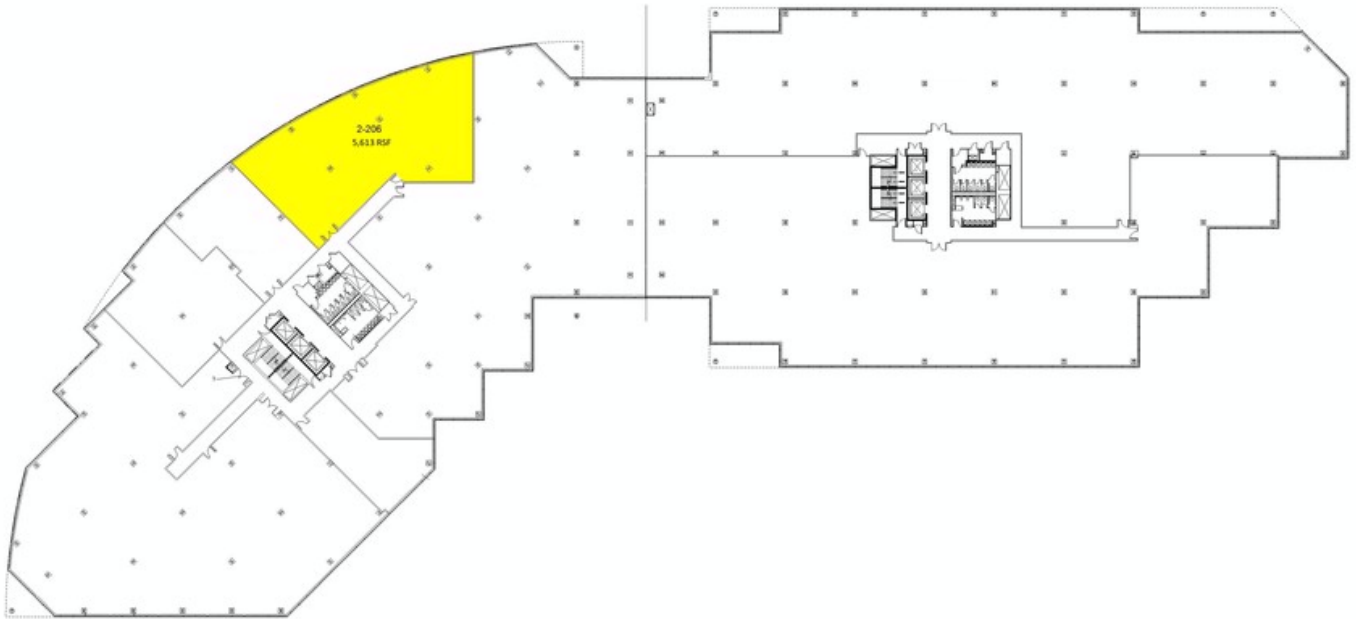
Quorum Federal Credit Union; Hitachi Metals America; Apollo Real Estate Acquisition LLC; Integramed America, Inc.; Richard Fleishman Associates, Inc.

AMENITIES

ATM machine. Attractive landscaped grounds. Balconies. Café. Conference facility. Courtyard. Covered parking. Dry cleaner. Exercise facility. Express bus to train. High speed internet. Mailroom. On-site management. Overnight mail (Fedex, Airborne, UPS, etc.). Picnic areas. Pond. Private corporate setting.

OTHER BUILDING INFO

Building Area: 171,031 sf **Number of Floors:** 4 **Floor Sizes:** Typical Floor Size 40,200 rsf **Ceiling Height:** 11'3" **Manager:** George Comfort & Sons Inc. **Year Built/Renovated:** Built: 1984 **Tenancy:** Multi-tenant **Building Class:** A **Primary Type:** Office **Property Status:** Existing



1-2 Manhattanville Road

George Comfort & Sons, Inc.
200 Madison Avenue New York, NY 10016



Floor 2

Prepared by PlanData Systems Corp

